

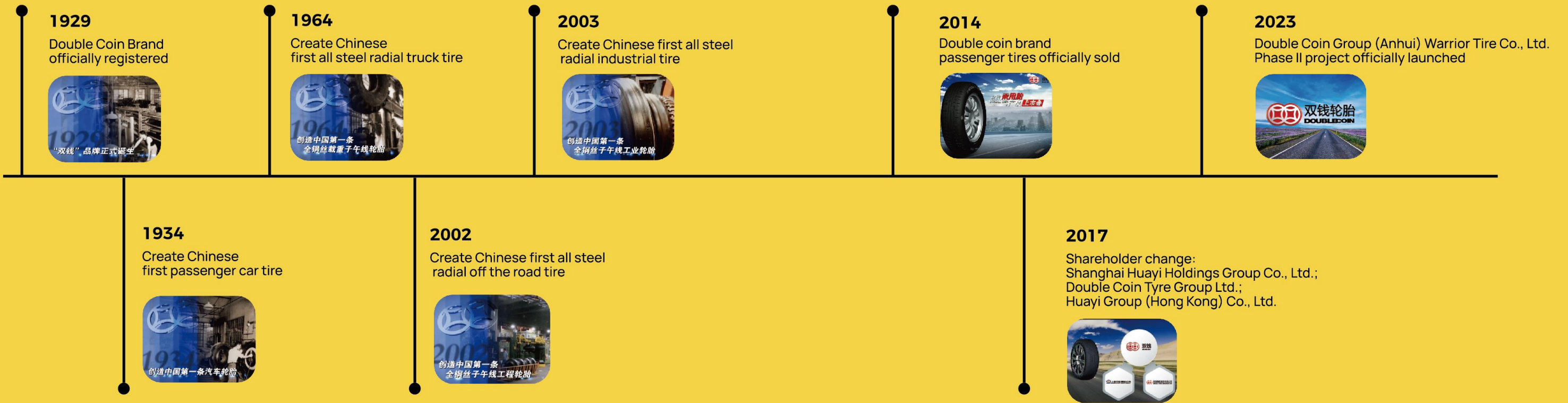


2025 DOUBLECOIN CATALOGUE



DRIVEN THE WORLD OVER

DEVELOPMENT HISTORY



GLOBAL ACCESSIBILITY, SHARED BY THE WORLD

DOUBLE COIN Tire is committed to providing high-quality, standardized products and warm and thoughtful services to global users with dedication.

1 One national level technology center | **5** Five major production bases | **10 million sets** Annual sales exceeding 10 million sets

Domestic market

The dealer network covers the whole country, Over 20000 retail channels

International market

Establishing marketing networks in the United States, Europe, and the Middle East, Our products are sold to over 100 countries and regions around the world

GROUP INTRODUCTION



Company Profile

Double Coin Group (Anhui) Warrior Tire Co., Ltd

Double Coin Group (Anhui) Warrior Tire Co., Ltd. is a joint venture jointly controlled by Shanghai Huayi Holdings Group Co., Ltd., and Double Coin Tire Group Co., Ltd., It is the founder of China's national tire industry. The production base is located in Erba Industrial Park, Jiujiang Economic Development Zone, Erba Town, Jiujiang District, Wuhu City, Anhui Province, covering an area of nearly a thousand acres. The company's mission is to fully build the Chinese passenger tire brand and its goal is to establish the largest car tire production base in Anhui province. By fully integrating the respective advantages of shareholders in the tire business, the company's scale will reach world-class standards, and its core technological strength, corporate competitiveness, and brand influence will continue to improve. It is a leading enterprise in China's national tire industry.



Full Range Product Catalog

HIGH PERFORMANCE



Abysilency

Abysilency SUV

Unicontrol [EV]

Run-flat Tire

Acoustic Tire

HIGH MILEAGE



DC-780 [EV]

Winter tires



DW-300

DW-500

Light truck tires



DynoPulse VAN

DL-19

HP/UHP Passenger Car Tires



DCO-MAX

DynoPulse HP

DynoPulse UHP

DC-100

All Season tires



DASP-PLUS

DASL-PLUS

SUV tires



DynoPulse SUV

Exploross X/T

DS-AT+

DS-66

DS-66HP

Abysilency

SAVOR THE JOURNEY
IN TRANQUILITY

PATTERN DESIGN

1 WIDE MAIN GROOVES DESIGN

4 wide longitudinal main pattern grooves for fast drainage. It improves drainage performance and handling performance in wet condition.

2 MAIN GROOVE CHAMFER DESIGN

Add a pattern groove chamfer on the edge of the main groove to improve the ground area of the tire during steering and improve the handling performance.

3 INNOVATIVE DESIGN OF STEEL GROOVE

It is easier to cut the water film, improve the tire wetland performance, and prevent the occurrence of "hydroplaning" phenomenon.

4 SEMI-CLOSED CROSS DITCH DESIGN

Reduced air flow in longitudinal and transverse grooves and reduced noise.

5 TRANSVERSE GROOVE CHAMFER DESIGN

Reduced the noise of the pattern block hitting the ground, and increased the ground area when starting and braking. Driving is quiet and safe.

6 WIDE DRIVING SURFACE DESIGN

Widen the tread design to increase the ground area and improve the grip.

7 DISLOCATION SPOILER DESIGN

Disturbed the air flow in the vertical channel during driving, and reduced the noise of the pattern pump.

8 SHOULDER SLOPE DESIGN

The actual contact patch width increases with tread wear, ensuring grip performance throughout the entire lifecycle.

9 CONTINUOUS CENTRAL RIB DESIGN

Ensured the stiffness and ground area of the center area, improved the maneuverability and improved the grip. Reduced air flow and reduce noise.

10 ASYMMETRIC MISALIGNMENT DESIGN

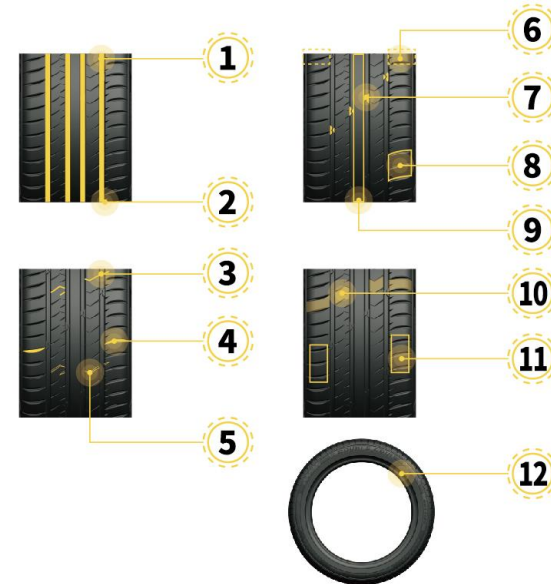
The asymmetric pattern design and shoulder groove dislocation produce interference effect, which is conducive to reducing resonance noise.

11 VARIABLE PITCH PATTERN BLOCK DESIGN

Reduced the resonance noise generated by the pattern blocks and grooves between the pitches during operation, improved ride comfort.

12 RIM PROTECTION STRUCTURE

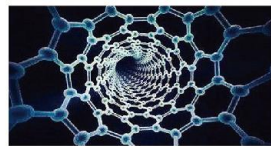
Increased the rim protection structure to protect the rim from scratches.



STRUCTURAL CHARACTERISTICS

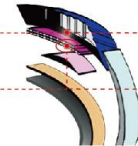
The new generation G.E.P formula

The latest generation of multi-functional Solution Styrene and Butadiene Rubber (SSBR) and environmentally friendly high-efficiency anti-skid resin were added. While reducing the tire roll resistance, it greatly improves the tire wet braking performance, shortens the braking distance on the wet road, and ensures safe driving is more reliable.



STRUCTURAL CHARACTERISTICS

Bio-based nylon 56



The crown strip uses the **bio-based material nylon 56**, which has high heat resistance and high wear resistance, greatly improving the dimensional stability and durability of the tire.

Ultra-high strength ST steel wire

The belt layer uses **ultra-high strength ST steel wire**, which has excellent fatigue performance and improves tire service life.

SIZE	RIM	Load capacity	Max Speed
235/45ZR17	17	97	W
225/55ZR17	17	101	W
225/50ZR17	17	98	W
225/45ZR17	17	94	W
215/55ZR17	17	94	W
215/50ZR17	17	95	W
245/45ZR18	18	100	W
235/45ZR18	18	98	W
255/40ZR19	19	100	W
245/55R19	19	103	V
235/55R19	19	105	V
225/45ZR19	19	96	W

new

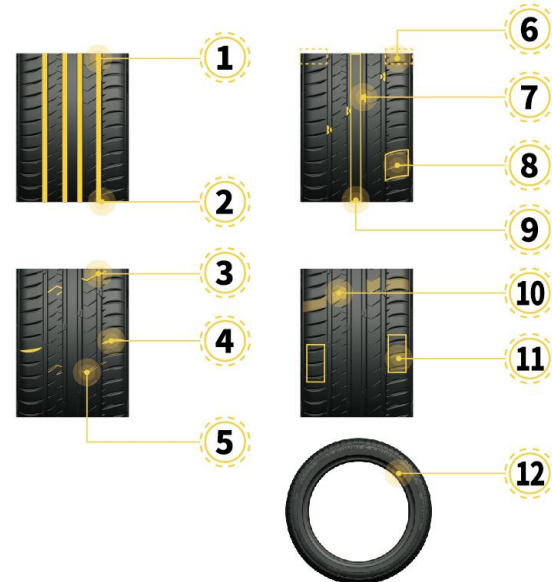


Abysilency SUV

SAVOR THE JOURNEY
IN TRANQUILITY

PATTERN DESIGN

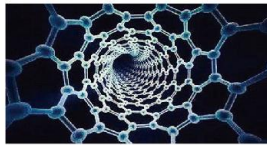
- 1 WIDE MAIN GROOVES DESIGN**
4 wide longitudinal main pattern grooves for fast drainage. It improves drainage performance and handling performance in wet condition.
- 2 MAIN GROOVE CHAMFER DESIGN**
Add a pattern groove chamfer on the edge of the main groove to improve the ground area of the tire during steering and improve the handling performance.
- 3 INNOVATIVE DESIGN OF STEEL GROOVE**
It is easier to cut the water film, improve the tire wetland performance, and prevent the occurrence of "hydroplaning" phenomenon.
- 4 SEMI-CLOSED CROSS DITCH DESIGN**
Reduced air flow in longitudinal and transverse grooves and reduced noise.
- 5 TRANSVERSE GROOVE CHAMFER DESIGN**
Reduced the noise of the pattern block hitting the ground, and increased the ground area when starting and braking. Driving is quiet and safe.
- 6 WIDE DRIVING SURFACE DESIGN**
Widen the tread design to increase the ground area and improve the grip.
- 7 DISLOCATION SPOILER DESIGN**
Disturbed the air flow in the vertical channel during driving, and reduced the noise of the pattern pump.
- 8 SHOULDER SLOPE DESIGN**
The actual contact patch width increases with tread wear, ensuring grip performance throughout the entire lifecycle.
- 9 CONTINUOUS CENTRAL RIB DESIGN**
Ensured the stiffness and ground area of the center area, improved the maneuverability and improved the grip. Reduced air flow and reduce noise.
- 10 ASYMMETRIC MISALIGNMENT DESIGN**
The asymmetric pattern design and shoulder groove dislocation produce interference effect, which is conducive to reducing resonance noise.
- 11 VARIABLE PITCH PATTERN BLOCK DESIGN**
Reduced the resonance noise generated by the pattern blocks and grooves between the pitches during operation, improved ride comfort.
- 12 RIM PROTECTION STRUCTURE**
Increased the rim protection structure to protect the rim from scratches.



STRUCTURAL CHARACTERISTICS

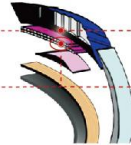
The new generation C.E.P formula

The latest generation of multi-functional Solution Styrene and Butadiene Rubber (SSBR) and environmentally friendly high-efficiency anti-skid resin were added. While reducing the tire roll resistance, it greatly improves the tire wet braking performance, shortens the braking distance on the wet road, and ensures safe driving is more reliable.



STRUCTURAL CHARACTERISTICS

Bio-based nylon 56



The crown strip uses the **bio-based material nylon 56**, which has high heat resistance and high wear resistance, greatly improving the dimensional stability and durability of the tire.

Ultra-high strength ST steel wire

The belt layer uses **ultra-high strength ST steel wire**, which has excellent fatigue performance and improves tire service life.

SIZE	RIM	Load capacity	Max Speed
225/65R17	17	102	V
215/65R17	17	99	V
235/60R18	18	107	V
235/60R18	18	103	H
235/55R18	18	104	V
235/50ZR18	18	97	W
235/50R18	18	101	V
225/55ZR18	18	102	W
215/55R18	18	99	V
265/50ZR19	19	110	W
235/45R19	19	95	V
255/55ZR20	20	110	W
255/50ZR20	20	109	W
255/45ZR20	20	105	W
275/45ZR21	21	110	W

new



Unicontrol EV

SILENT REVOLUTION UNSTOPPABLE MOMENTUM

PATTERN DESIGN

1 WIDE MAIN GROOVES DESIGN

Enhanced Drainage Architecture
Optimized Wet Traction

2 CLOSED LATERAL GROOVE DESIGN

Sealed connections between longitudinal and lateral grooves minimize airflow turbulence, reducing noise generation. Stiffened outer shoulder blocks enhance cornering stability with precise steering response.

3 STEEL BLADE GROOVE DESIGN

Steel-reinforced grooves shear water films to improve wet traction.

4 CHAMFERED LATERAL GROOVES

The angled groove edges reduce noise generation while expanding the contact patch during acceleration/braking, ensuring quieter operation and enhanced grip security.

5 CHAMFERED MAIN GROOVES

The angled groove edges increase contact patch during cornering, enhancing steering precision and grip stability.

6 WIDE TREAD DESIGN

The widened tread configuration increases contact patch area, enhancing grip and traction for responsive handling.

7 SHOULDER GRADUATION DESIGN

The progressive contour expands contact width with tread wear, ensuring sustained grip performance throughout service life.

8 ASYMMETRIC STAGGERED DESIGN

The asymmetrical tread pattern with staggered shoulder grooves reduces resonance noise through phase cancellation, maintaining balanced wet and dry performance.

9 TURBULATOR BLOCK DESIGN

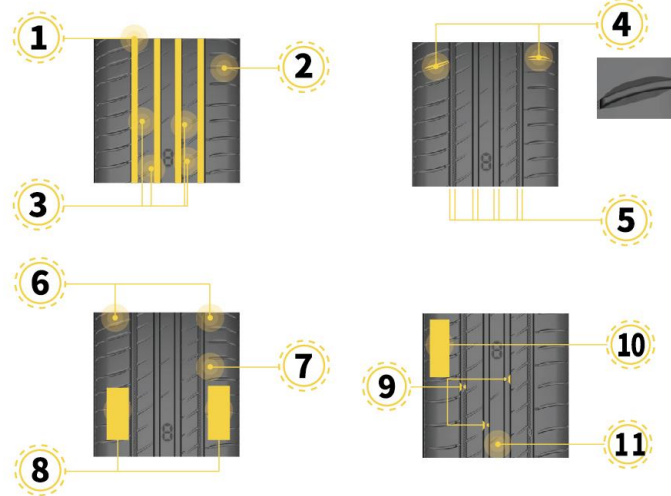
Specially positioned blocks disrupt longitudinal groove airflow patterns, effectively suppressing pumping noise generation through aerodynamic optimization.

10 VARIABLE PITCH BLOCK DESIGN

Differently spaced tread blocks disrupt noise frequency coherence, reducing tonal resonance to enhance ride comfort.

11 COMPOUND FORMULATION

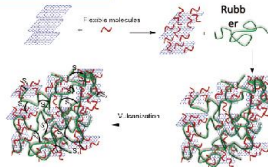
The advanced formula integrates next-gen SSBR and eco-friendly wet-grip resins, lowering rolling resistance while significantly enhancing wet braking efficiency for shorter stopping distances.



COMPOUND TECHNOLOGY

DC EGC Compound Technology

This innovative tire compound utilizes graft-modified SSBR and a high-load silica reinforcement system to optimize tan properties, achieving a 10% reduction in rolling resistance through advanced filler network design while enhancing wet grip by over 50% with terpene resin modification, all without compromising treadwear durability—making it ideal for next-generation EV and ultra-high-performance tires.



Next-gen modified polymers

The advanced formulation employs next-generation modified polymers to suppress intermolecular motion at the molecular level, effectively minimizing heat generation and delivering optimal low rolling resistance performance.



Acoustically optimized tread design

The innovative tread design minimizes road noise through optimized transverse grooves and outer ribs with narrowed channels, effectively reducing air intake into tread cavities for significant noise reduction.

Tread Feature Highlights



Quieter Ride | Silent grooves cut noise



Longer Drive | low-roll tech boosts mileage

SIZE	RIM	Load capacity	Max Speed
215/60R17	17	100	V
215/55R17	17	98	Y
265/60R18	18	110	H
255/55R18	18	109	V
245/60R18	18	105	H
245/50ZR18	18	100	W
245/40ZR18	18	97	W
235/65R18	18	106	H
235/45ZR18	18	98	Y
225/60R18	18	100	H
225/50ZR18	18	95	W
225/45ZR18	18	95	W
225/40ZR18	18	92	W
215/50ZR18	18	92	Y
275/40ZR19	19	101	Y
275/35ZR19	19	100	Y
255/55R19	19	107	V
255/50ZR19	19	107	W
255/45ZR19	19	100	W
245/50ZR19	19	105	W
245/45ZR19	19	102	Y
245/40ZR19	19	98	W
235/50R19	19	99	V
235/40ZR19	19	96	W
225/55R19	19	99	V
275/45ZR20	20	110	Y
275/40ZR20	20	106	W
245/45R20	20	103	V
245/40ZR20	20	99	Y
235/55R20	20	102	V
235/50ZR20	20	104	W
265/45ZR21	21	108	W
265/40ZR21	21	105	W
255/45ZR21	21	105	W

new



Run-flat Tire

**ENHANCED STRENGTH
UNMATCHED SUPERIORITY**

PRODUCT STRUCTURE DESIGN

BELT (A) DESIGN

Tire ground impression analysis under the condition of air shortage, tire stress is highly concentrated on the shoulder, so the shoulder is strengthened by widening the width of the belt and crown layer to improve the durability of the tire.

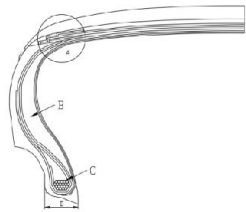
SIDEWALL SUPPORTING RUBBER (B) DESIGN

Add supporting rubber beneath the inner liner on the sidewall.

Supporting rubber has the characteristics of high modulus and low heat generation.

BEAD DESIGN

To improve the strength of the bead, the bead toe (D) should be widened, and the width should be increased by 1-2mm on the basis of ordinary tires. At the same time, the strength of the bead wire (C) increases by 25% with the increase of the number of strands; ensure that the toe is tightly attached to the rim when the tire is short of air.



RUN-FLAT TIRE INTRODUCTION

RUN-FLAT TIRE

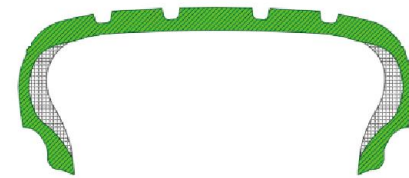
Also known as Zero Pressure Continuation Tire. It incorporates a special supporting rubber with certain load-bearing capacity. This allows the vehicle to travel at a speed of approximately 60-80 km/h for a distance of about 60-80 kilometers in the event of tire deflation or complete loss of air pressure. Subsequently, the vehicle owner should locate a nearby tire shop to address the tire issue. Conversely, an ordinary tire, when deflated to a critical level, will sustain damage after traveling just a short distance of tens of meters.

ADVANTAGES OF RUN-FLAT TIRES

Enhanced Safety: In the event of sudden tire pressure loss, the thicker tire sidewall ensures that the tire remains attached to the wheel hub and provides sufficient support to the vehicle.

Improved Convenience: The tire can travel a certain distance even when completely deflated, eliminating the immediate need to stop and change the tire.

Reduced Weight and Space: By eliminating the need for a spare tire, space is saved, and vehicle weight is reduced.



DRT PRODUCTION LOGO DESIGN



TIRE SIZE	PATTERN	RIM	LOAD INDEX	SPEED SYMBOL
225/50ZR18	Abysilency Unicontrol EV (DRT)	18	95	W
235/50ZR18	Abysilency (DRT)	18	97	W
245/45ZR18	Abysilency (DRT)	18	100	W
245/50ZR18	Abysilency Unicontrol EV (DRT)	18	95	W
235/55ZR19	Abysilency (DRT)	19	105	W
245/40ZR19	Abysilency (DRT)	19	98	W
245/45ZR19	Abysilency Unicontrol EV (DRT)	19	102	Y
245/50ZR19	Abysilency Unicontrol EV (DRT)	19	105	W
275/35ZR19	Abysilency (DRT)	19	96	Y
275/40ZR19	Abysilency Unicontrol EV (DRT)	19	101	Y

new



Acoustic Tire

SILENT REVOLUTION UNSTOPPABLE MOMENTUM

TIRE SIZE	PATTERN	RIM	LOAD INDEX	SPEED SYMBOL
235/45ZR18	UNICONTROL EV Acoustic Tyre	18	98	Y
235/45R19	ABYSILENCY SUV Acoustic Tyre	19	95	V
235/50R19	UNICONTROL EV Acoustic Tyre	19	99	V
245/45ZR19	UNICONTROL EV Acoustic Tyre	19	102	Y
255/45ZR20	ABYSILENCY SUV Acoustic Tyre	20	105	W
255/50ZR20	ABYSILENCY SUV Acoustic Tyre	20	109	W

ULTIMATE SILENCE



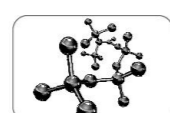
- SOUNDPROOF COTTON DESIGN**
- Solves tire noise issues from the source;
 - High-performance polyurethane sound-absorbing material;
 - Effectively absorbs tire cavity noise.



- MAIN AND LATERAL GROOVE CHAMFER DESIGN**
- Chamfer on the edges of the main and lateral grooves increase contact area during cornering;
 - Significantly enhances ride comfort and noise reduction;
 - Reduces noise by 7.7% compared to standard tires.



- POLYMER DESIGN**
- Strong adhesion with excellent retention;
 - Flexible on curved surfaces, providing good bonding on the tire surface;
 - Performs well across a wide range of temperatures.



- UNIQUE COMPOUND**
- Optimized structure and formula significantly improve rigidity and grip;
 - Shortens braking distance by 10% compared to standard products;
 - Low rolling resistance reduces fuel consumption by 5%, making it more eco-friendly.

CAVITY SOUND-ABSORBING FOAM NOISE REDUCTION

- Polyurethane foam sound-absorbing cotton added inside the tire;
- Reduces cavity noise by 2dB compared to regular tires;
- Further enhances quietness and driving comfort for a quieter ride.

SOUNDPROOF TIRE PRINCIPLE

- Equipped with sound-absorbing material secured with sealant on the inner liner;
- Absorbs noise directly at the source;
- Reduces cabin noise by 5-8 dB(A) around the 200 Hz frequency range;
- No impact on driving performance;
- Same installation and storage as standard tires.

SOUND-ABSORBING FOAM

- Foam Width = 100-200 mm
- Foam Thickness = 20-40 mm
- Foam Length = Based on tire size
- Foam Joint Gap = 3-40 mm

new



DCO-MAX

ENJOY THE DRIVE IN PEACE AND COMFORT

PATTERN DESIGN

1 WIDE MAIN GROOVE DESIGN

Four wide longitudinal main pattern grooves for quick drainage. It improves drainage efficiency and handling performance in wet condition.

2 SHOULDER CONTINUOUS PATTERN BLOCK

The connected patterns guarantee the stability of drive and steering.

3 STEEL SHEET INTERLOCKING AND DISCONNECTING DESIGN

Increase the rigidity of the pattern block and effectively improve operability.

4 THE LATERAL TRANSVERSE AND LONGITUDINAL GROOVES ARE CLOSED

Block the transmission of longitudinal groove pump suction noise to the outside. Reduce noise both outside the vehicle and inside the cabin where it reaches the ears.

5 MAIN GROOVE BOTTOM KNURLED DESIGN

Effectively breaks cavity noise and improves comfort.

6 UNEQUAL PITCH PATTERN BLOCK DESIGN

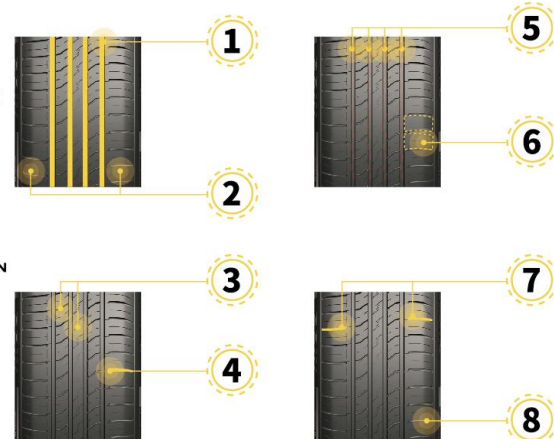
Effectively disperse tire noise to achieve quiet effect.

7 SHOULDER GROOVE DISLOCATION DESIGN

The dislocation of shoulder groove produces interference effect, which is conducive to reducing noise.

8 SHOULDER SLOPE DESIGN

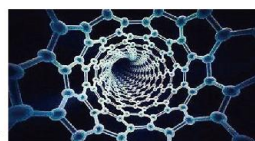
The actual contact patch width increases with tread wear, ensuring grip performance throughout the entire lifecycle.



STRUCTURAL CHARACTERISTICS

The new generation G.E.P formula

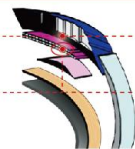
The latest generation of multi-functional Solution Styrene and Butadiene Rubber (SSBR) and environmentally friendly high-efficiency anti-skid resin were added. While reducing the tire roll resistance, it greatly improves the tire wet braking performance, shortens the braking distance on the wet road, and ensures safe driving is more reliable.



STRUCTURAL CHARACTERISTICS

bio-based nylon 56

ultra-high strength ST steel wire



The crown strip uses the **bio-based material nylon 56**, which has high heat resistance and high wear resistance, greatly improving the dimensional stability and durability of the tire.

The belt layer uses **ultra-high strength ST steel wire**, which has excellent fatigue performance and improves tire service life.

SIZE	RIM	Load capacity	Max Speed
175/75R13	13	85	T
175/70R13	13	82	T
185/70R14	14	88	H
185/65R14	14	86	H
185/60R14	14	82	H
175/70R14	14	86	T
175/70R14	14	84	T
175/65R14	14	82	H
205/65R15	15	94	V
195/65R15	15	91	V
195/60R15	15	88	H
195/50R15	15	85	V
185/65R15	15	88	H
185/60R15	15	84	H
215/60R16	16	95	V
205/60R16	16	92	V
205/55R16	16	91	V
195/60R16	16	89	H
195/55ZR16	16	91	W

new



DynoPulse HP

COMFORT CRAFTED HYDROPLANING DEFIED

PATTERN DESIGN

1 HORIZONTAL AND VERTICAL GROOVES RUN THROUGH

- Improved drainage and mud discharge performance.
- Improved grip performance.

2 CLOSED OUTSIDE HORIZONTAL AND VERTICAL GROOVES

- Block the transmission of longitudinal groove pump suction noise to the outside.
- Reduce noise both outside the vehicle and inside the cabin where it reaches the ears.
- The connected patterns guarantee the stability of drive and steering.

3 UNEQUAL PITCH PATTERN BLOCK DESIGN

- Effectively dispersed tire noise to achieve quiet effect.

4 SHOULDER GROOVE MISALIGNMENT DESIGN

- Shoulder groove misalignment creates an interference effect, which is beneficial for reducing noise.

5 GROOVE INTERCONNECTION

- The interconnection between steel sheet and grooves helps in reducing noise.

6 SHOULDER SLOPE DESIGN

- The actual contact patch width increases with tread wear, ensuring grip performance throughout the entire lifecycle.

7 SOUND-ABSORBING CHAMBER DESIGN

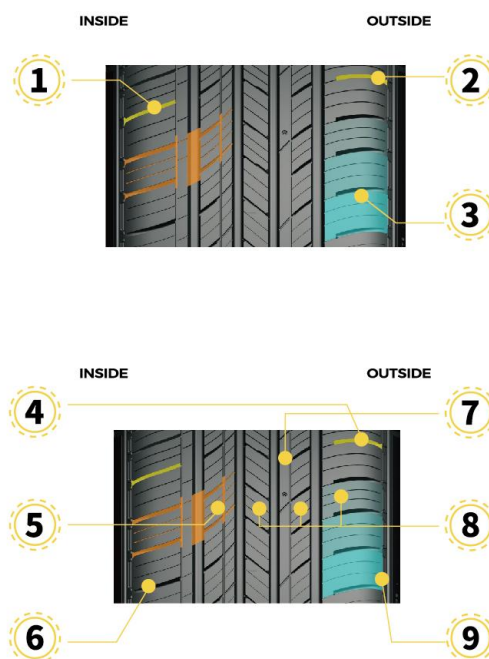
- Absorbing noise generated during tire operation, effectively reducing noise.

8 MULTI-SHEET STEEL DESIGN

- Improved grip on wet road, changed the frequency of flower blocks hitting the ground, reduced noise.

9 SHOULDER PATTERN

- Not only aesthetic, but also improves grip on muddy roads



SIZE	RIM	Load capacity	Max Speed
175/70R13	13	82	H
175/60R13	13	77	T
165/70R13	13	79	H
155/65R13	13	73	H
185/70R14	14	88	H
185/65R14	14	86	H
185/60R14	14	82	H
175/70R14	14	84	H
175/65R14	14	82	H
175/60R14	14	79	H
165/70R14	14	81	H
165/60R14	14	75	T
155/65R14	14	75	T
205/65R15	15	94	V
195/60R15	15	88	H
195/55R15	15	85	V
185/65R15	15	88	H
185/60R15	15	84	H
185/55R15	15	82	V
175/65R15	15	84	H
165/65R15	15	81	T
175/55R16	16	80	H

new



DynoPulse UHP

**ADRENALINE ENGINEERED,
CONTROL PERFECTED**

PATTERN DESIGN

1 HORIZONTAL AND VERTICAL GROOVES RUN THROUGH

- Improved drainage and mud discharge performance.
- Improved grip performance.

2 CLOSED OUTSIDE HORIZONTAL AND VERTICAL GROOVES

- Block the transmission of longitudinal groove pump suction noise to the outside.
- Reduce noise both outside the vehicle and inside the cabin where it reaches the ears.
- The connected patterns guarantee the stability of drive and steering.

3 UNEQUAL PITCH PATTERN BLOCK DESIGN

- Effectively dispersed tire noise to achieve quiet effect.

4 SHOULDER GROOVE MISALIGNMENT DESIGN

- Shoulder groove misalignment creates an interference effect, which is beneficial for reducing noise.

5 GROOVE INTERCONNECTION

- The interconnection between steel sheet and grooves helps in reducing noise.

6 SHOULDER SLOPE DESIGN

- The actual contact patch width increases with tread wear, ensuring grip performance throughout the entire lifecycle.

7 SOUND-ABSORBING CHAMBER DESIGN

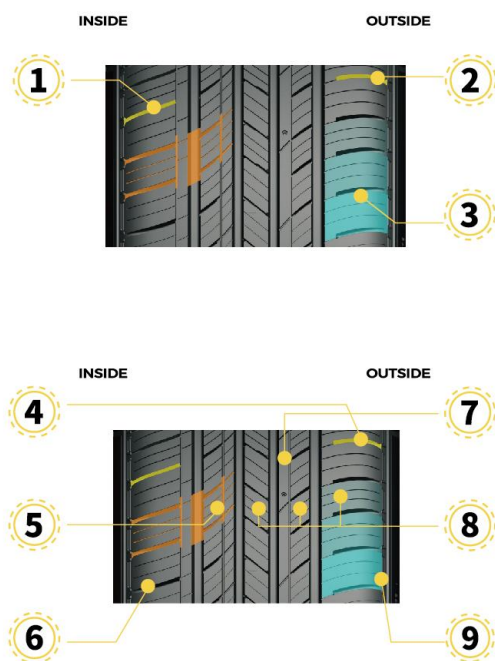
- Absorbing noise generated during tire operation, effectively reducing noise.

8 MULTI-SHEET STEEL DESIGN

- Improved grip on wet road, changed the frequency of flower blocks hitting the ground, reduced noise.

9 SHOULDER PATTERN

- Not only aesthetic, but also improves grip on muddy roads



SIZE	RIM	Load capacity	Max Speed
195/65R15	15	91	V
225/60R16	16	98	V
225/55R16	16	95	V
215/60R16	16	99	V
215/55Z16	16	93	W
215/55R16	16	93	V
205/65R16	16	95	V
205/60R16	16	92	V
205/55R16	16	91	V
205/50R16	16	87	V
195/60R16	16	89	H
195/55R16	16	91	H
255/45Z17	17	98	W
235/50R17	17	96	V
235/45R17	17	97	V
225/55Z17	17	101	W
225/55R17	17	101	V
225/50Z17	17	98	W
225/50R17	17	98	V
225/45R17	17	94	V
215/55Z17	17	98	W
215/55R17	17	98	V
215/50R17	17	95	V
215/45R17	17	91	V
205/50R17	17	93	V
255/45Z18	18	103	Y
255/40Z18	18	99	Y
245/50Z18	18	100	W
245/45R18	18	100	V
245/40R18	18	97	V
235/45R18	18	98	V
225/45R18	18	95	T
225/45R18	18	95	V
225/40R18	18	92	V
215/45Z18	18	93	W
245/45Z19	19	102	W
245/40Z19	19	98	Y
235/40R19	19	96	V
225/45R19	19	96	V

new



DynoPulse SUV

NIMBLE INTELLIGENCE SILENT SYMPHONY

PATTERN DESIGN

1 FOUR WIDE MAIN GROOVES DESIGN

- Improved drainage performance.
- Improved handling performance in wet condition.

2 LARGE ANGLE DIAGONAL PATTERN AND CONTINUOUS CENTRAL RIB DESIGN

- Ensured the rigidity of the pattern block.
- Provided strong traction and braking performance.

3 OPTIMIZED THE TRANSVERSE GROOVE DESIGN

- Improved water drainage. Effectively prevented the phenomenon of water film.
- Improved handling performance in wet condition.

4 MULTI-SHEET STEEL DESIGN

- Improved grip on wet road, changed the frequency of flower blocks hitting the ground, reduced noise.

5 ASYMMETRIC MISALIGNMENT DESIGN

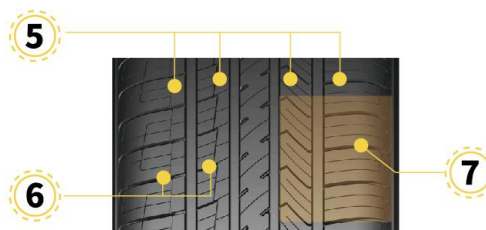
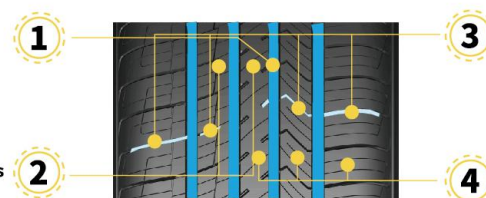
- The asymmetric pattern design and shoulder groove dislocation produce interference effect, which is conducive to reducing resonance noise.

6 COMPACT DESIGN OF SHOULDER PATTERN GROOVES

- Reduced the transverse groove width and effectively reduced the noise generated by air flow.

7 VARIABLE PITCH PATTERN BLOCK DESIGN

- Reduced the resonance noise generated by the pattern blocks and grooves between the pitches during operation.



SIZE	RIM	Load capacity	Max Speed
245/70R16	16	107	S
235/70R16	16	106	T
215/70R16	16	104	T
215/65R16	16	102	V
265/65R17	17	112	T
245/65R17	17	107	H
235/65R17	17	108	V
235/55R17	17	103	V
225/65R17	17	102	H
225/60R17	17	99	H
215/65R17	17	99	V
215/60R17	17	96	V
205/55R17	17	91	V
285/60R18	18	116	H
265/65R18	18	114	T
265/60R18	18	110	H
255/60R18	18	112	V
255/55R18	18	109	V
245/60R18	18	105	H
235/65R18	18	106	H
235/60R18	18	107	V
235/55R18	18	100	V
235/50R18	18	97	V
225/60R18	18	100	H
225/55R18	18	102	V
225/50R18	18	99	V
215/55R18	18	99	V
215/50ZR18	18	92	Y
265/50ZR19	19	110	W
255/55R19	19	107	V
255/50ZR19	19	107	W
255/45ZR19	19	104	Y
245/55R19	19	103	V
235/55R19	19	105	V
235/50R19	19	103	V
235/45R19	19	95	V
225/55R19	19	99	V
275/45ZR20	20	110	Y
265/50R20	20	107	V
255/50ZR20	20	109	Y
255/45ZR20	20	105	W
245/50R20	20	102	V
245/45ZR20	20	103	Y
235/55ZR20	20	102	W

new



DynoPulse VAN

**ENDURANCE EVOLVED
EFFICIENCY ENGINEERED**

PATTERN DESIGN

1 THREE V-SHAPED MAIN GROOVES DESIGN

- Wide main grooves improve drainage performance.
- V-shaped grooves improve operation in wet condition.

2 HORIZONTAL GROOVE DESIGN

- Enhanced handling performance on wet road.
- Formed a wide opening to prevent stone pinching, reduced abnormal damage, and enhanced tire mileage.

3 CLOSED SHOULDER GROOVE DESIGN

- Reduced noise generated by air flow.
- Alleviated stress concentration on the shoulder during heavy loads, reduced abnormal damage, and extend tire lifespan.

4 STAGGERED STEEL SHEET DESIGN

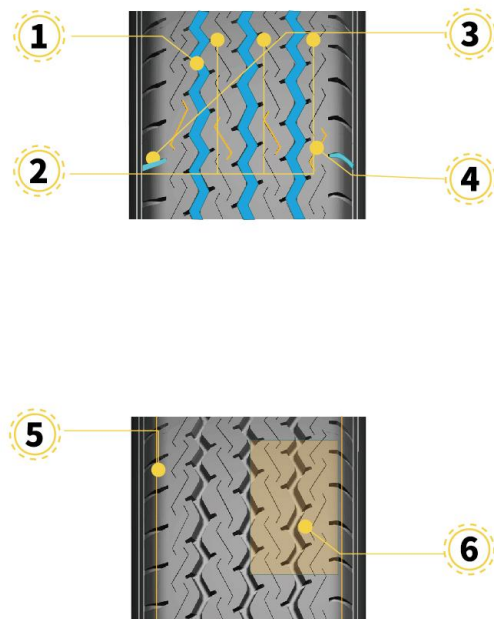
- Improved grip in wet condition.
- Increased tread rigidity and improved handling performance.

5 TREAD DESIGN

- Wider tread design to increase the contact area, enhancing grip.
- Reduces tread stress, increasing wear resistance and improving mileage.

6 VARIABLE PITCH PATTERN BLOCK DESIGN

- Shoulder arc design that gradually increases the contact surface width as the tire wears.
- Reduced the resonance noise generated by the pattern blocks and grooves between the pitches during operation, improved ride comfort.



SIZE	RIM	Load capacity	Max Speed
165/70R13	13	88/86	S
185R14	14	102/100	Q
175/75R14	14	99/98	R
175/70R14	14	95/93	S
165R14	14	97/95	T
215/70R15	15	109/107	R
195/70R15	15	104/102	R
215/75R16	16	113/111	R

new



Exploross X/T

ASPIRATION ENGINEERED HORIZON REDEFINED

SIZE	RIM	Load capacity	Max Speed
LT255/60R19	19	119/116	T
LT245/70R17	17	119/116	S
LT265/65R18	18	122/119	O
LT255/70R16	16	155/112	S
LT265/65R17	17	120/117	S

PATTERN DESIGN

1 SUPERIOR TREAD DESIGN

- Improve the durability of the gravel pavement;

2 STRONG TRACTION GROOVE

- Enhance the performance of the mud/snow road.

3 STONE /MUD EJECTION

- Cut the clods of mud in the groove.
- assist in removing stones trapped between the treads to prevent damage.

4 SOLID SHOULDER BLOCK

- Adapt to multiple road conditions
- provide a stronger driving force.

5 STRENGTHENED SIDEWALL RUBBER

- Promote the tire's resistance to tearing and cutting, effectively protecting the casing ply.

6 STRETCHABLE SHOULDER EXTENSION

- Protect vulnerable areas by thickening rubber road.



new



DS-66

- The robust central rib design, combined with a uniformly distributed all-weather tread pattern, provides precise straight-line handling while improving durability and ensuring even wear. This design delivers high mileage performance.
- The ultra-wide tread area increases the contact surface, offering a more stable handling experience. Using computer modeling, vibration frequency and tread center alignment details are optimized with a fine multi-pitch distribution, resulting in a quieter and more comfortable ride.
- The wide and sturdy outer shoulder ensures smooth and comfortable driving, offering precise and stable steering control while resisting pressure during cornering. The inner shoulder, with fine groove designs, provides self-cleaning functionality on wet roads, enhancing grip and wet handling performance.
- Warrior's proprietary "Low Heat Generation & Durability" rubber compound enhances tire durability and extends its lifespan.

SIZE	RIM	Load capacity	Max Speed
235/75R15	15	105	S
225/75R15	15	102	S
215/75R15	15	100	S
205/70R15	15	96	S
245/70R16	16	107	S
235/70R16	16	106	T
235/60R16	16	100	H
225/70R16	16	103	T
215/75R16	16	103	S
215/70R16	16	100	T
215/65R16	16	98	H
265/65R17	17	112	T
265/65R17	17	112	H
245/65R17	17	107	S
245/65R17	17	111	H
235/65R17	17	104	T
235/65R17	17	108	V
225/65R17	17	102	H
225/60R17	17	99	T
225/60R17	17	99	H
215/60R17	17	96	H
215/60R17	17	100	V



DC-780EV

- Wide main grooves enhance drainage performance
- Tread main groove depth increased by 5%
- Knurled main groove walls reduce noise
- Overall wear mileage increased by approximately 10%

SIZE	RIM	Load capacity	Max Speed
145/70R12	12	69	T
175/60R15	15	81	H
165/65R15	15	81	H
205/60R16	16	92	V
185/55R16	16	87	H
175/55R16	16	80	H
215/55R17	17	98	V
215/50R17	17	91	V
205/50R17	17	93	V
215/55R18	18	99	V



DS-66 HP

- The central continuous rib design ensures straight-line stability during high-speed driving. The toothed edges, combined with stepped longitudinal grooves, enhance handling on wet and slippery roads, delivering outstanding high-stability control performance.
- Open shoulder tread grooves facilitate efficient heat dissipation at high speeds while ensuring excellent drainage and cornering grip. The optimized pitch ratio design effectively disperses and reduces noise, enhancing overall driving comfort.
- The optimized tread arc with uneven curvature and wide contact design ensures even ground pressure distribution, improving steering stability and handling balance.
- Warrior's proprietary "Low Heat Generation & Durability" rubber compound enhances tire durability and extends its lifespan.

SIZE	RIM	Load capacity	Max Speed
265/60R18	18	110	H
255/55R18	18	109	V
245/60R18	18	105	H
235/65R18	18	106	H
235/60ZR18	18	103	W
235/60ZR18	18	107	W
235/55R18	18	100	V
225/60R18	18	100	H
225/55R18	18	98	V
225/55ZR18	18	102	W
215/55R18	18	95	H
215/55R18	18	99	V
255/55R19	19	111	V
255/50ZR19	19	107	W
245/55R19	19	103	V
235/55R19	19	105	V
235/55ZR19	19	105	W
235/50R19	19	99	V
225/55R19	19	99	V
275/45R20	20	110	V
245/50R20	20	102	V
245/45R20	20	103	V
245/45ZR20	20	103	W
235/55R20	20	102	H
235/55R20	20	102	V



DC-100

- The chamfered edges of the tread blocks effectively cut through water film, ensuring safety on wet roads, delivering improved stability and safety during high-speed driving on both dry and wet surfaces.
- The unique arched density design at the shoulder edge improves sidewall grip and prevents abnormal wear, significantly enhancing vehicle handling during cornering.
- The specially formulated carbon black and silica compound enhances tire durability while delivering the necessary grip for high-speed performance on both dry and wet surfaces, and significantly improving braking efficiency.

The robust central tread block reinforcement ensures tire stability during straight-line driving.

SIZE	RIM	Load capacity	Max Speed
255/45ZR17	17	98	W
245/45ZR17	17	99	W
245/45ZR17	17	95	W
235/55ZR17	17	99	W
235/50ZR17	17	96	W
235/45ZR17	17	94	W
235/45ZR17	17	97	W
225/45ZR17	17	91	W
225/45ZR17	17	94	W
215/45ZR17	17	87	W
215/45ZR17	17	91	W
205/50ZR17	17	93	W
255/45ZR18	18	99	W
245/50ZR18	18	100	W
245/45ZR18	18	100	W
245/45ZR18	18	96	W
245/40ZR18	18	97	W
245/40ZR18	18	93	W
235/50ZR18	18	97	W
235/45ZR18	18	98	W
235/45ZR18	18	94	W
235/40ZR18	18	95	Y
225/50ZR18	18	95	W
225/45ZR18	18	95	W
225/45R18	18	95	V
225/45ZR18	18	91	W
225/40ZR18	18	92	W
255/45R19	19	100	V
255/45ZR19	19	104	W
255/35ZR19	19	96	Y
245/45ZR19	19	102	Y
245/40ZR19	19	98	W
245/35ZR19	19	93	Y
235/35ZR19	19	91	Y
225/45ZR19	19	96	W
255/35ZR20	20	97	Y



DL-19

- Excellent drainage performance.
- Improve the tire's grip on wet and dry roads.
- Effectively increase the grounding area, so that the tire has stronger grip. More stable handling when driving straight and turning.
- Effectively reduce noise and improve ride comfort.
- Increases the lateral rigidity of the tire, giving it better traction and braking ability. It also reduces tire noise.

SIZE	RIM	Load capacity	Max Speed
165R13	13	94/92	R
195R14	14	106/104	R
185R14	14	102/100	Q
175R14	14	99/98	R
175R14	14	99/97	R
175/75R14	14	99/98	Q
175/75R14	14	99/98	R
175/75R14	14	99/96	R
175/70R14	14	95/93	S
175/70R14	14	93/90	S
165R14	14	97/95	T
165R14	14	97/95	S
165R14	14	96/95	S
225/70R15-10PR	15	116/114	Q
225/70R15	15	112/110	R
215/70R15	15	109/107	R
215/70R15	15	104/101	R
205/70R15	15	107/103	R
205/70R15	15	106/104	R
205/65R15	15	102/100	T
195R15	15	106/104	R
195/70R15	15	104/102	Q
195/70R15	15	104/102	R
195/70R15	15	104/101	R
185R15	15	103/102	R
185/65R15	15	99/96	N
235/65R16	16	115/113	T
225/65R16	16	112/110	T
215/75R16	16	113/111	Q
215/75R16	16	113/111	R
215/75R16	16	112/109	Q
215/70R16	16	108/106	R
215/65R16	16	109/107	T
205/75R16	16	113/111	R
205/65R16	16	107/105	T
195/75R16	16	107/105	R
195/65R16	16	104/102	T
185/75R16	16	104/102	R



DASP-PLUS

- Special Nano Compound, Significantly improves rubber performance, Suitable for all seasons and weather; excellent handling performance,
- Uni-Directional Tread Pattern, Good high-speed performance, Effective drainage and snow evacuation
- Wide-Spaced Transverse Grooves, Breaks water film and drains water quickly
- 3D Sipe Design, Block Cuts water film, increases contact area, Ensures dry and wet handling performance
- Shoulder Design + "Ribbon" Steel Belt Design Enhanced anti-slip performance, Reliable safety performance in all weather conditions

SIZE	RIM	Load capacity	Max Speed
165/70R13	13	79	T
185/65R14	14	86	T
185/60R14	14	82	H
185/55R14	14	80	T
175/65R14	14	82	T
175/65R14	14	86	H
165/65R14	14	79	T
165/60R14	14	79	H
155/65R14	14	75	T
195/65R15	15	95	T
195/65R15	15	95	V
195/65R15	15	91	H
195/60R15	15	88	H
195/55R15	15	85	H
195/50R15	15	82	V
185/65R15	15	88	H
185/65R15	15	92	T
185/65R15	15	88	T
185/60R15	15	88	H
185/55R15	15	82	H
175/65R15	15	88	H
165/65R15	15	81	T
215/65R16	16	102	V
215/60R16	16	99	V
215/55R16	16	97	V
205/60R16	16	96	H
205/55R16	16	94	V
205/45R16	16	87	V
195/55R16	16	91	H
195/45R16	16	84	V
185/55R16	16	87	V
235/65R17	17	108	V
235/55R17	17	103	V
225/55ZR17	17	101	W
225/50R17	17	98	Y
225/45ZR17	17	94	V
215/60R17	17	100	V
215/55ZR17	17	98	W
215/50ZR17	17	95	W
215/45ZR17	17	91	W
205/55R17	17	95	V
205/50ZR17	17	93	W
205/45ZR17	17	88	Y
245/45ZR18	18	100	Y
235/60R18	18	107	V
235/50R18	18	101	V
225/55R18	18	98	V
225/40ZR18	18	92	Y
215/55R18	18	99	V
255/55R19	19	107	V



DASL-PLUS

- Significantly enhances the mechanical properties of the rubber, increasing tire grip and improving wet resistance and handling performance. It also greatly improves the rubber's resistance to cold and heat, making it suitable for all seasons and various climate challenges.
- Effectively disperses tire noise by disrupting sound wave overlap, achieving a quieter ride.
- The robust, interconnected shoulder blocks enhance rigidity and reduce shoulder deformation and heat generation. Wide shoulder grooves effectively dissipate heat. Together, these features minimize heat buildup, making the tire suitable for high-speed use in hot weather.
- Cuts through water film, increases the contact area, and enhances anti-slip performance in rainy and snowy conditions.

SIZE	RIM	Load capacity	Max Speed
215/70R15	15	109/107	R
195/70R15	15	104/102	R
235/65R16	16	115/113	T
225/65R16	16	112/110	T
215/65R16	16	109/107	T
205/65R16	16	107/105	T
195/75R16	16	107/105	R
195/65R16	16	104/102	T



DW-500

- Three longitudinal main grooves enable rapid snow evacuation, while additional transverse grooves in the center and outer sections significantly enhance shearing force on snowy roads, improving anti-slip performance and ensuring stable and safe steering.
- The variable pitch offset design optimizes the crown's contact frequency, greatly reducing noise at the crown.
- The asymmetrical center tread design reduces contact noise at the crown, while the outer transverse grooves and sipes enhance steering stability.
- The straight, layered gradient design of the shoulders ensures excellent snow-cutting and snow-evacuation performance on the outer edges.

SIZE	RIM	Load capacity	Max Speed
205/55R16	16	91	T
265/65R17	17	112	T
245/70R17	17	110	T
225/65R17	17	106	T
205/55R17	17	95	T
205/50R17	17	93	H
245/50R18	18	104	H
245/40R18	18	97	H
235/45R18	18	98	H
225/60R18	18	104	H
225/50R18	18	99	H
255/45R19	19	100	T
245/45R19	19	98	T
235/60R19	19	107	T
235/50R19	19	99	T
225/55R19	19	99	H
255/55R20	20	110	T
255/50R20	20	109	T
255/45R20	20	105	T
245/50R20	20	102	T
245/45R20	20	103	T
235/55R20	20	102	T
235/50R20	20	104	T
235/45R20	20	100	T
265/45R21	21	104	T
265/40R21	21	105	T
255/45R21	21	105	T



DW-300

- Deeper tread groove depth combined with softer tread rubber increases surface area, making it harder to cut through snow columns. The intersecting longitudinal zigzag grooves and transverse grooves effectively grip accumulated snow, providing reliable braking and driving performance on snowy roads.
- Tiny water retention holes on the shoulder, along with small transverse shoulder grooves, effectively enhance snow traction and braking performance.
- All sipe patterns feature a 3D structure, effectively dissipating heat and breaking up water films on the road, significantly improving performance on slippery surfaces.
- A wider tread surface, combined with a softer rubber compound, provides greater grip on icy and snowy roads, ensuring safe and worry-free driving in winter conditions.

SIZE	RIM	Load capacity	Max Speed
165/70R13	13	79	T
185/65R14	14	86	T
185/60R14	14	82	T
175/70R14	14	84	T
175/70R14	14	88	T
175/65R14	14	82	T
205/65R15	15	94	T
205/65R15	15	94	H
195/70R15	15	104/102	Q
195/70R15	15	104/102	R
195/70R15	15	99/96	Q
195/65R15	15	91	T
195/65R15	15	95	H
195/60R15	15	88	T
195/60R15	15	88	H
195/55R15	15	85	T
195/55R15	15	85	H
185/65R15	15	88	T
185/60R15	15	84	T
185/60R15	15	88	T
185/55R15	15	86	T
185/55R15	15	86	H
235/70R16	16	106	T
225/55R16	16	95	T
225/55R16	16	99	H

SIZE	RIM	Load capacity	Max Speed
215/65R16	16	98	S
215/65R16	16	98	H
215/60R16	16	95	T
215/60R16	16	99	H
215/55R16	16	93	T
215/55R16	16	97	H
205/65R16	16	95	T
205/60R16	16	92	T
205/60R16	16	96	H
205/55R16	16	91	T
205/55R16	16	94	V
195/60R16	16	89	T
195/60R16	16	89	H
195/55R16	16	91	T
195/55R16	16	91	H
235/65R17	17	104	Q
235/65R17	17	108	H
235/55R17	17	99	S
235/55R17	17	103	V
235/50R17	17	96	S

SIZE	RIM	Load capacity	Max Speed
235/50R17	17	100	V
235/45R17	17	97	T
235/45R17	17	97	V
225/65R17	17	102	Q
225/65R17	17	106	H
225/60R17	17	99	T
225/60R17	17	103	V
225/55R17	17	97	T
225/55R17	17	101	V
225/50R17	17	94	T
225/50R17	17	98	V
225/45R17	17	91	T
225/45R17	17	94	V
225/45R17	17	94	T
215/65R17	17	99	T
215/65R17	17	99	H
215/60R17	17	96	Q
215/60R17	17	100	H
215/55R17	17	94	T
215/55R17	17	98	V
215/50R17	17	91	T
215/50R17	17	95	V
215/50R17	17	95	T
285/60R18	18	116	T

SIZE	RIM	Load capacity	Max Speed
265/60R18	18	110	T
265/60R18	18	114	H
245/60R18	18	105	T
245/45R18	18	100	V
245/45R18	18	100	S
235/65R18	18	106	T
235/65R18	18	110	H
235/60R18	18	107	Q
235/60R18	18	107	H
235/55R18	18	100	Q
235/55R18	18	104	H
235/50R18	18	97	S
235/50R18	18	101	V
235/45R18	18	98	S
235/45R18	18	98	V
225/60R18	18	100	Q
225/60R18	18	104	V
225/55R18	18	98	T
225/55R18	18	102	V
225/45R18	18	95	S
225/45R18	18	95	V
215/55R18	18	95	Q
215/55R18	18	99	V
245/55R19	19	103	H
235/55R19	19	101	T
235/55R19	19	105	V



DS-AT+

- The continuous integrated central design enhances tire strength and ensures stability during driving.
- The "Z"-shaped four grooves increase the tire's grip on irregular surfaces while improving self-cleaning performance on muddy and gravel roads.
- The wide open shoulder design improves the tire's lateral rigidity, providing superior traction and braking performance.
- The tread features a high-mileage, eco-friendly compound that extends the tire's lifespan by 15%.

SIZE	RIM	Load capacity	Max Speed
235/75R15	15	104/101	S
215/75R15	15	100/97	S
215/75R15	15	100/97	S
265/75R16	16	123/120	R
265/70R16	16	115	T
265/70R16	16	117/114	R
265/70R16	16	121/118	R
245/70R16	16	107	T
235/70R16	16	106	T
215/80R16	16	107	R
265/65R17	17	112	T
285/60R18	18	120	T
265/60R18	18	114	T

