



Quality is the Basis

Honesty is the Foundation

Culture is the Soul

— Staff of Kunlun Are Like a Family



Xinjiang Kunlun Engineering Tire Co., Ltd
Address: No. 200, Tayang Road, Tashdian, Korla City, Bazhou, Xinjiang
TEL: 0086-0996-2182038
WEBSITE: www.kunluntyre.com

BIAS TYRE PRODUCT MANUAL



Xinjiang Kunlun Engineering Tire Co., Ltd

COMPANY PROFILE

Xinjiang Kunlun Engineering Tyre Co., Ltd. is a joint-stock enterprise controlled by Shanghai Double coin Group Co., Ltd. under Shanghai Huayi Group. It is a wholly-owned subsidiary of Double coin Group (Xinjiang) Kunlun Tyre Co., Ltd., mainly engaged in the production and sales of various types of bias tyres. It is a state-owned large-scale category-II enterprise under the supervision of the Xinjiang Uygur Autonomous Region, one of the largest tyre manufacturers in the northwest region.

The Company's predecessor was the Xinjiang Rubber Factory founded in 1971, and was listed as one of the 59 designated tyre manufacturers by the Ministry of Chemical Industry. In accordance with the relevant policies of the national pilot cities for optimizing capital structure, on September 23, 1997, The Company merged the Urumqi Tyre Factory with debt obligations and was renamed to Xinjiang Kunlun Co., Ltd. On December 29, 2009, the name was changed to Xinjiang Kunlun Tyre Co., Ltd. In July 2011, the Company's equity was adjusted and it is renamed Xinjiang Kunlun Engineering Tyre Co., Ltd.

The Company has a registered capital of RMB 115 million and total assets of RMB 600 million. It has an annual production capacity of 1.2 million sets of bias tyres and 200,000 sets of engineering tyres and sales revenue of more than RMB 1 billion. It mainly produces and sells various types of bias tyres. It currently has five series of bias tyre products with more than 200 specifications and more than 800 varieties in five major series: engineering machinery, engineering load-bearing, agriculture, industrial vehicles, and load-bearing.

The Company has always been committed to the development strategy of Concentrating and Focusing on, and specializing in Producing the Best and Most Complete Rubber Tyres in China's Tyre Industry to achieve a stronger and bigger Kunlun business. Relying on domestically advanced process equipment, production organization system and mature and perfect modern management mechanism, the Company keeps up with the market and continuously launches "new, unique and special" tyre products to meet the market needs. Kunlun brand tyres rank among the best in the country in terms of product quality, reputation and market positioning, and enjoy high notability and reputation. At the same time, they are also exported to Vietnam, Thailand, Pakistan, Indonesia and other Southeast Asian and surrounding Central Asian countries. The product is awarded with the title of "Xinjiang Famous Brand Product" in the first batch in Xinjiang, and "Kunlun" trademark was rated as one of "Xinjiang Famous Brands" in the first batch; the product won the honors of "Consumer Trustworthy Product" and "Quality Supervision Inspection-Free Products".

Under the leadership of Huayi Group, Double coin Group and Xinjiang Head Office, all employees of the Company will always shoulder the lofty responsibilities and missions entrusted by history, and adhere to the cultural concept of "Quality is the Root, Integrity is the Foundation, Culture is the Soul, and the Kunlun is A Family in the World", adhere to the Kunlun development path of "Specificity, Precision, and Characteristics", always follow the corporate value concept of "Loyalty, Responsibility, Integrity and Win-win, and Be A Person and Company Respected by the Society", and are committed to becoming the most professional tyre manufacturer and service provider in China so as to provide customers with high-quality and satisfactory products, and to build the Company into a large-scale enterprise group with scientific management, outstanding main business, strong innovation ability, independent brands and strong core competitiveness.

CONTENTS

AGRICULTURAL RADIAL TYRE SERIES	1-2
AGRICULTURAL MACHINERY TYRE SERIES	3-6
AGRICULTURAL TYRE SERIES	7-14
PORT TYRE SERIES	15-17
INDUSTRY VEHICLE PNEUMATIC TYRE SERIES	18-20
INDUSTRIAL VEHICLE SOLID TYRE SERIES	21
TRUCK TYRE SERIES	22-26
ENGINEERING LOAD SERIES	27-32
ENGINEERING MACHINERY TYRE SERIES	33-37
LIGHT TRUCK TYRE	38-43

AGRICULTURAL RADIAL TYRE SERIES

KT178 (R-1W)

Features:

Strong traction, fuel-saving and puncture-resistant.



Tyre Specification	Pattern Depth	Measuring Rim	Dimension/mm		Load Capacity	Load Capacity/kg	Inflation Pressure/kpa
			Outer Diameter	Section Width			
IF520/85R42	53.0mm	DW18L	1951	526	169	5800kg(40/50km/h)	240kpa(40/50km/h)
520/85R42	54.0mm	DW16L	1951	516	162B	4750kg(40/50km/h)	240kpa(40/50km/h)
IF710/70R42	52.0mm	DW23B	2061	705	179	7750Kg (30km/h)	240KPa(30km/h)
580/70R42	52.0mm	DW18L	1879	577	158	4250Kg(40km/h)	160KPa(40km/h)
650/65R42	50.0mm	DW20A	1913	645	165	5150Kg(65km/h)	240KPa(65km/h)
520/85R38	51.0mm	DW16L	1849	516	155	3875kg(40km)	160Kpa(40km)
460/85R38	48.0mm	W14L	1747	455	149	3250kg(40km/h)	160kpa(40km/h)
480/80R38	50.0mm	W15	1733	479	149	3450kg(40/50km/h)	200Kpa
710/70R38	51.0mm	DW23A	1959	716	171	6150Kg (40km/h)	240KPa(40km/h)
650/65R38	51.0mm	DW20A	1811	645	157	4125kg(65km)	160Kpa(50km)
600/65R38	55.0mm	DW18A	1745	591	159D	4375kg	240Kpa
IF580/80R34	53.0mm	DW20B	1792	576	177	7300kg(40/50km/h)	360Kpa
620/75R34	51.0mm	DW20B	1794	625	170	6420Kg(40km/h)	320KPa(40km/h)
420/90R30	45.0mm	DW13	1518	418	147	3075Kg(65km/h)	240KPa(40km/h)
420/85R30	46.0mm	W13	1476	418	140	2500kg	160kpa
600/70R30	51.0mm	DW18L	1602	591	158	4250Kg(40km/h)	240KPa(40km/h)
600/70R28	52.5mm	DW18L	1551	601	157	4125kg	240KPa
540/65R30	50.0mm	W18L	1464	550	143	2725kg(65km/h)	160kpa(65km/h)
420/85R28	45.0mm	W13	1425	418	139	2430kg(40km/h)	160kpa(40km/h)
380/85R30	43.0mm	W12	1105	293	135	2180kg	160Kpa
380/85R28	46.0mm	W12	1357	380	133	2060kg(40km/h)	160kpa(40km/h)
440/80R28	45.0mm	DW14L	1415	441	156	4000Kg(40km/h)	320KPa(40km/h)
540/65R28	48.0mm	W18L	1441	578	142	2650Kg(65km/h)	160KPa(65km/h)
420/85R24	50.0mm	W15L	1324	418	137D	2300kg	160Kpa



AGRICULTURAL RADIAL TYRE SERIES

KT179 (R-1W)

Features:

Strong traction, fuel-saving and puncture-resistant.



Tyre Specification	Pattern Depth	Measuring Rim	Dimension/mm		Load Capacity	Load Capacity/kg	Inflation Pressure/kpa
			Outer Diameter	Section Width			
650/65R38	51.0mm	DW20A	1811	645	157	4125kg(50km/h)	160kpa(50km/h)
540/65R30	50.0mm	W18L	1464	550	143	2725kg(65km/h)	160kpa(65km/h)
480/70R28	41.0mm	W15L	1421	479	140	2500kg(65km/h)	160kpa(65km/h)

AGRICULTURAL MACHINERY TYRE SERIES



AGRICULTURAL MACHINERY TYRE SERIES

KT755 (R-4)

Features:

Strong grip, resistance to puncturing, good wear resistance and good driving performance, suitable for farmland operations.



Tyre Specification	Pattern Depth	Standard Rim	Level	Dimension/mm		Load Capacity/kg	Inflation Pressure/kpa
				Outer Diameter	Section Width		
500/50-17	21.0mm	16.00	18PR	932	503	3000/4125	400
400/60-15.5	15.5mm	AG13.00	14PR	874	404	2900	350
26X12.00-12	16.0mm	10.50	8PR	648	307	1370	340
21L-24	26.0mm	DW18A	16PR	1378	533	4500	280
19.5L-24	31.0mm	DW16L	16PR	1314	495	3540 (40km/h)	240(40km/h)
19.5L-24	31.0mm	DW16L	14PR	1314	495	3450 (40km/h)	230(40km/h)
16.9-28	25.0mm	W15L	△14PR	1435	430	3700	300
14-17.5	26.5mm	10.50	14PR	921	349	3875	550
☆12-16.5	17.0mm	9.75	14PR	831	307	3075	620
☆10-16.5	17.0mm	8.25	14PR	746	256	2750	720

KT8D (I-1)

Features:

Strong grip, resistance to puncturing, good wear resistance and good driving performance, suitable for farmland operations.



Tyre Specification	Pattern Depth	Standard Rim	Level	Dimension/mm		Load Capacity/kg	Inflation Pressure/kpa
				Outer Diameter	Section Width		
☆10-15	8.5mm	9	10PR	855	286	1525	390

KT58 (I-1)

Features:

Strong grip, resistance to puncturing, good wear resistance and good driving performance, suitable for farmland operations.



Tyre Specification	Pattern Depth	Standard Rim	Level	Dimension/mm		Load Capacity/kg	Inflation Pressure/kpa
				Outer Diameter	Section Width		
10.0/75-15.3	23.5mm	9	12PR	780	264	1700	470
10.0/75-15.3	10.0mm	9	10PR	760	264	1525	390

AGRICULTURAL MACHINERY TYRE SERIES

KT5 (R-1/I-2)

Features:

Strong grip, resistance to puncturing, good wear resistance and good driving performance, suitable for farmland operations.

Tyre Specification	Pattern Depth	Standard Rim	Level	Dimension/mm		Load Capacity/kg	Inflation Pressure/kpa
				Outer Diameter	Section Width		
10.0/75-15.3	23.5mm	9	12PR	760	264	1700	470
10.0/75-15.3	10.0mm	9	10PR	780	264	1525	390



KT676 (R-1/I-2)

Features:

Strong grip, resistance to puncturing, good wear resistance and good driving performance, suitable for farmland operations.

Tyre Specification	Pattern Depth	Standard Rim	Level	Dimension/mm		Load Capacity/kg	Inflation Pressure/kpa
				Outer Diameter	Section Width		
☆ 10/75-15.3	24.5mm	9	10PR	910	315	1525	390

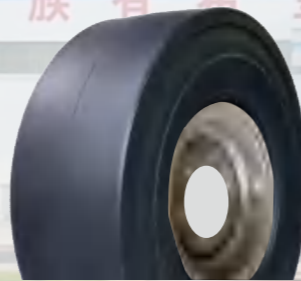


KT100S (R-4)

Features:

Strong grip, resistance to puncturing, good wear resistance and good driving performance, suitable for farmland operations.

Tyre Specification	Pattern Depth	Standard Rim	Level	Dimension/mm		Load Capacity/kg	Inflation Pressure/kpa
				Outer Diameter	Section Width		
10.0/75-15.3	-	9	12PR	736	264	2500	470



AGRICULTURAL MACHINERY TYRE SERIES

KT566 (CR-1)

Features:

Strong grip, resistance to puncturing, good wear resistance and good driving performance, suitable for farmland operations.

Tyre Specification	Pattern Depth	Standard Rim	Level	Dimension/mm		Load Capacity/kg	Inflation Pressure/kpa
				Outer Diameter	Section Width		
☆ 12.00-18	16.0mm	9.00V	12PR	1090	327	2300	420



KT2D (I-1)

Features:

Strong grip, resistance to puncturing, good wear resistance and good driving performance, suitable for farmland operations.

Tyre Specification	Pattern Depth	Standard Rim	Level	Dimension/mm		Load Capacity/kg	Inflation Pressure/kpa
				Outer Diameter	Section Width		
• 6.50-20	14.0mm	5.00F	8PR	860	180	865	420



KT4D (I-1)

Features:

Strong grip, resistance to puncturing, good wear resistance and good driving performance, suitable for farmland operations.

Tyre Specification	Pattern Depth	Standard Rim	Level	Dimension/mm		Load Capacity/kg	Inflation Pressure/kpa
				Outer Diameter	Section Width		
6.00-16	12.0mm	4.00E	8PR	740	160	670	450
6.00-16	12.0mm	4.00E	6PR	740	160	560	340
5.00-15	10.0mm	4J	△8PR	665	140	550	500



AGRICULTURAL TYRE SERIES

KT66 (R-1)

Features:

Strong grip, resistance to puncturing, good wear resistance and good driving performance, suitable for farmland operations.



Tyre Specification	Pattern Depth	Standard Rim	Level	Dimension/mm		Load Capacity/kg	Inflation Pressure/kpa
				Outer Diameter	Section Width		
20.8-38	40.0mm	W18L	△20PR	1835	528	6000	400
20.8-38	40.0mm	W18L	△16PR	1835	528	4800	280
20.8-38	40.0mm	W18L	12PR	1835	528	4000	200
18.4-34	37.0mm	W16L	12PR	1655	467	3375	230
16.9-34	38.5mm	W15L	△12PR	1585	430	2830	240
16.9-34	38.0mm	W15L	10PR	1585	430	2605	200
15-24	31.0mm	DW14	△12PR	1330	410	3100	330
13.6-28	35.0mm	W12	△12PR	1310	345	2170	280
13.6-28	35.0mm	W12	10PR	1310	345	1910	250
12.4-28	33.0mm	W11	10PR	1260	315	1725	300
8.3-20	28.0mm	W7	6PR	895	210	695	240

AGRICULTURAL TYRE SERIES

KT7D (R-1)

Features:

Strong grip, resistance to puncturing, good wear resistance and good driving performance, suitable for farmland operations.



Tyre Specification	Pattern Depth	Standard Rim	Level	Dimension/mm		Load Capacity/kg	Inflation Pressure/kpa
				Outer Diameter	Section Width		
23.1-26	41.0mm	DW20	△18PR	1605	587	4840	280
23.1-26	41.0mm	DW20	12PR	1605	587	3610	170
15L-24	38.0mm	W12	14PR	1160	365	2300	280

KT5 (R-1)

Features:

Strong grip, resistance to puncturing, good wear resistance and good driving performance, suitable for farmland operations.



Tyre Specification	Pattern Depth	Standard Rim	Level	Dimension/mm		Load Capacity/kg	Inflation Pressure/kpa
				Outer Diameter	Section Width		
12-38	36.0mm	DW11	△12PR	1575	330	2500	260
12-38	36.0mm	DW11	10PR	1575	330	1800	220
7.50-16	25.0mm	5.50F	6PR	810	205	650	210
6.50-16	24.0mm	5.00F	6PR	765	180	565	250

AGRICULTURAL TYRE SERIES

KT6 (R-1)

Features:

Strong grip, resistance to puncturing, good wear resistance and good driving performance, suitable for farmland operations.



Tyre Specification	Pattern Depth	Standard Rim	Level	Dimension/mm		Load Capacity/kg	Inflation Pressure/kpa
				Outer Diameter	Section Width		
14.9-24	32.0mm	W13	△ 16PR	1265	378	2500	270
14.9-24	32.0mm	W13	10PR	1265	378	1990	230
14.9-24	32.0mm	W13	8PR	1265	378	1760	180
☆13.6-20	32.0mm	W12	△ 8PR	900	345	830	280
12.4-24	34.0mm	W11	10 PR	1160	315	1500	280
12.4-24	34.0mm	W11	8PR	1160	315	1415	230
12.4-24	34.0mm	W11	6PR	1160	31	1200	170
11.2-24	33.0mm	W10	10 PR	1105	285	1380	300
11.2-24	33.0mm	W10	8PR	1105	285	1225	240
☆9.5-16	31.0mm	W8L	△ 8PR	855	255	830	280
8.3-24	30.0mm	W7	8PR	995	210	830	250
7.50-20	30.0mm	5.50F	8PR	910	205	760	210

KT69 (R-1)

Features:

Strong grip, resistance to puncturing, good wear resistance and good driving performance, suitable for farmland operations.



Tyre Specification	Pattern Depth	Standard Rim	Level	Dimension/mm		Load Capacity/kg	Inflation Pressure/kpa
				Outer Diameter	Section Width		
18.4-30	40.0mm	W16L	△ 14PR	1550	467	3180	230
16.9-30	37.0mm	W15L	△ 14PR	1485	430	2940	270
14.9-28	38.0mm	W12	12PR	1365	378	2120	230
☆ 13.6-16	31.5mm	W12	△ 10PR	955	345	1300	340
12.4-28	41.0mm	W11	12PR	1260	315	1950	340

AGRICULTURAL TYRE SERIES

KT676 (R-1)

Features:

Strong grip, resistance to puncturing, good wear resistance and good driving performance, suitable for farmland operations.



Tyre Specification	Pattern Depth	Standard Rim	Level	Dimension/mm		Load Capacity/kg	Inflation Pressure/kpa
				Outer Diameter	Section Width		
18.4-30	40.0mm	W16L	12PR	1550	467	3180	230
18.4-30	40.0mm	W16L	10PR	1550	467	2815	180
16.9-38	38.0mm	W15L	12PR	1685	430	3300	240
16.9-30	36.0mm	W15L	12PR	1485	430	2730	240
16.9-30	36.0mm	W15L	10PR	1485	430	2455	200
16.9-28	36.0mm	W15L	10PR	1435	430	2380	200
16.9-28	36.0mm	W15L	8PR	1435	430	2175	170
16.9-26	36.6mm	W15L	10PR	1385	430	2305	200
13.6-24	35.0mm	W12	10PR	1210	345	1790	250
12.4-32	34.0mm	W11	10PR	1360	315	1800	280
11.2-28	33.0mm	W10	8PR	1205	285	1305	240
11-38	32.5mm	W10	12PR	1540	305	2495	250
11-38	32.5mm	W10	△ 8PR	1540	305	1800	180
11-32	32.0mm	W10	10PR	1460	305	1700	240
9.5-32	31.0mm	W8	△ 10PR	1250	240	1300	300
9.5-32	31.0mm	W8	8PR	1250	240	1260	280

AGRICULTURAL TYRE SERIES

KT56 (R-1)

Features:

Strong grip, resistance to puncturing, good wear resistance and good driving performance, suitable for farmland operations.



Tyre Specification	Pattern Depth	Standard Rim	Level	Dimension/mm		Load Capacity/kg	Inflation Pressure/kpa
				Outer Diameter	Section Width		
12.4-28	40.0mm	W11	△ 12PR	1260	315	1950	340
12.4-28	40.0mm	W11	△ 10PR	1260	315	1725	300
11.2-28	41.5mm	W10	△ 12PR	1205	285	1620	240
11.2-28	41.5mm	W10	△ 10PR	1205	285	1470	280
11.2-24	38.0mm	W10	10PR	1105	285	1380	300
9.5-24	38.0mm	W8	△ 10PR	1050	240	1280	350
8.3-24	33.0mm	W7	△ 10PR	995	210	850	260
8.3-24	33.0mm	W7	8PR	995	210	830	250
8.3-20	32.0mm	W7	△ 12PR	895	210	860	320
8.3-20	32.0mm	W7	△ 10PR	895	210	780	300
8.3-20	28.0mm	W7	8PR	895	210	850	310
7.50-16	32.0mm	5.50F	△ 10PR	810	205	920	360
7.50-16	30.0mm	5.50F	8PR	810	205	770	280
6.50-16	30.0mm	5.00F	△ 8PR	765	180	630	270

KT7 (R-1)

Features:

Strong grip, resistance to puncturing, good wear resistance and good driving performance, suitable for farmland operations.



Tyre Specification	Pattern Depth	Standard Rim	Level	Dimension/mm		Load Capacity/kg	Inflation Pressure/kpa
				Outer Diameter	Section Width		
9.5-24	33.0mm	W8	8PR	1050	240	1110	280
9.5-20	28.0mm	W8	6PR	950	240	810	210
6.00-16	28.5mm	4.50E	6PR	745	165	495	250

AGRICULTURAL TYRE SERIES

KT67 (R-1)

Features:

Strong grip, resistance to puncturing, good wear resistance and good driving performance, suitable for farmland operations.



Tyre Specification	Pattern Depth	Standard Rim	Level	Dimension/mm		Load Capacity/kg	Inflation Pressure/kpa
				Outer Diameter	Section Width		
12.4-24	36.0mm	W11	△ 10PR	1160	315	1500	280
11.2-24	34.0mm	W10	10PR	1105	285	1380	300
9.5-24	33.0mm	W8	△ 10PR	1050	240	1280	350
9.5-20	30.0mm	W8	△ 10PR	950	240	1100	350
8.3-20	32.0mm	W7	10PR	895	210	780	300
7.50-16	30.0mm	5.50F	8PR	810	205	770	280

KT6D (R-1S)

Features:

Strong grip, resistance to puncturing, good wear resistance and good driving performance, suitable for farmland operations.



Tyre Specification	Pattern Depth	Standard Rim	Level	Dimension/mm		Load Capacity/kg	Inflation Pressure/kpa
				Outer Diameter	Section Width		
20.8-42	40.0mm	W18L	12PR	1935	528	3750	190
14.9-30	37.0mm	W13	10PR	1415	378	2190	230
14.9-28	38.0mm	W13	10PR	1365	378	2120	230
14.9-26	37.0mm	W13	10PR	1315	378	2055	230
* 12.4-54	35.5mm	W11	12PR	1938	315	4000	320
9.5-28	28.0mm	W8	△ 10PR	1129	231	1420	320

AGRICULTURAL TYRE SERIES

KT171 (PR-1)

Features:

Strong grip, resistance to puncturing, good wear resistance and good driving performance, suitable for farmland operations.

Tyre Specification	Pattern Depth	Standard Rim	Level	Dimension/mm		Load Capacity/kg	Inflation Pressure/kpa
				Outer Diameter	Section Width		
12.4-28	85.0mm	W11	△10PR	1315	315	2230	240
11-32	80.0mm	W10	△10PR	1460	305	1280	240
11.2-24	85.0mm	W10	△10PR	1205	285	1830	250
11.2-24	85.0mm	W10	6PR	1205	285	1465	210
11-32	80.0mm	W10	6PR	1360	305	1080	160
9.5-20	80.0mm	W8	△ 8PR	1050	240	1300	280
8.3-20	80.0mm	W7	△ 8PR	950	210	1210	330
7.5-16	75.0mm	5.50F	△ 8PR	890	195	950	350



KT68 (R-1)

Features:

Strong grip, resistance to puncturing, good wear resistance and good driving performance, suitable for farmland operations.

Tyre Specification	Pattern Depth	Standard Rim	Level	Dimension/mm		Load Capacity/kg	Inflation Pressure/kpa
				Outer Diameter	Section Width		
18.4-38	39.0mm	W16L	△ 20PR	1755	467	4685	390
18.4-38	39.0mm	W16L	12PR	1755	467	3575	230
18.4-26	37.0mm	DW16	10PR	1450	467	2645	180
15.5-38	34.0mm	W14L	10PR	1570	395	2320	230
14.9-28	36.0mm	W13	8PR	1365	378	1880	180
14.9-26	38.5mm	W13	10PR	1315	378	2055	230
14.9-24	35.0mm	W13	10PR	1265	378	1990	230



AGRICULTURAL TYRE SERIES

KT172 (PR-1)

Features:

Strong grip, resistance to puncturing, good wear resistance and good driving performance, suitable for farmland operations.

Tyre Specification	Pattern Depth	Standard Rim	Level	Dimension/mm		Load Capacity/kg	Inflation Pressure/kpa
				Outer Diameter	Section Width		
☆20.8-38	95.0mm	W18L	△ 12PR	1900	528	4000	200
18.4-38	90.0mm	W16L	12PR	1855	467	3575	230
18.4-34	90.0mm	W16L	△ 12PR	1755	467	3590	240
16.9-34	90.0mm	W15L	△ 12PR	1685	430	3395	230
☆16.9-28	84.0mm	W15L	△ 12PR	1515	430	2580	230
14.9-30	90.0mm	W13	△ 12PR	1476	378	2430	260
☆14.9-28	85.0mm	W13	△ 12PR	1465	378	2120	230
☆14.9-26	82.5mm	W13	△ 10PR	1392	378	2875	260
14.9-24	74.0mm	W13	12PR	378	1410	2250	260
☆13.6-24	75.0mm	W12	△ 10PR	1245	345	2350	250
12.4-26	72.0mm	W11	8PR	1265	315	2010	260
8.3-24	66.5mm	W7	△ 8PR	1050	210	1325	320
6.5-16	60.0mm	5.50F	△ 8PR	830	165	585	250



KT181 (R-1)

Features:

Strong grip, resistance to puncturing, good wear resistance and good driving performance, suitable for farmland operations.

Tyre Specification	Pattern Depth	Standard Rim	Level	Dimension/mm		Load Capacity/kg	Inflation Pressure/kpa
				Outer Diameter	Section Width		
28L-26	95.0mm	W18L	16PR	1615	715	4800	210
28L-26	95.0mm	W18L	12PR	1615	715	3785	140
18.4-38	77.0mm	W16L	12PR	1800	467	3575	230
14.9-26	71.0mm	W13	10PR	1355	378	2055	230
☆12.4-48	59.0mm	W11	14PR	1845	315	3000	400
11.2-20	48.0mm	W10	△12PR	970	285	1800	430





PORT TYRE SERIES

PORT TYRE SERIES

KT619/•KT619C(E-4)

Features:

Its unique pattern can effectively reduce the noise and heat. With high-wearing surface, super-strong tyre body because of addition of nylon, this type of tyre has a strong bearing capacity and a high recapping rate. It is suitable for vehicles lifting containers since its blocky widened surface can improve lifting stability.



Tyre Specification	Pattern Depth	Standard Rim	Level	Dimension/mm		Load capacity at different speeds/kg			Inflation pressure at different speeds/kpa		
				Outer Diameter	Section Width	0Km/h	5Km/h	10Km/h	0Km/h	5Km/h	10Km/h
18.00-25	67.5mm	13.00/2.5	44PR	1675	500	1200	1200	1200	32700	26300	24300
14.00-24	59.0mm	10.00/2.0	28PR	1420	375	1100	1100	1100	18000	14500	13500
14.00-24TL	59.0mm	10.00/2.0	28PR	1420	375	1100	1100	1100	18000	14500	13500
12.00-24	54.0mm	8.5	△ 28PR	1275	315	1100	1100	1100	17100	13775	10500
•18.00-25	56.0mm	13.00/2.5	44PR	1675	500	1200	1200	1200	32700	26300	24300

KT620(IND-4)/•KT620C(E-4)

Features:

Its novel I-shaped pattern can effectively reduce the noise and heat. With high-wearing surface, super-strong tyre body because of addition of nylon, this type of tyre has a strong bearing capacity and a high recapping rate. It is suitable for vehicles lifting containers since its blocky widened surface can improve lifting stability.



Tyre Specification	Pattern Depth	Standard Rim	Level	Dimension/mm		Load capacity at different speeds/kg			Inflation pressure at different speeds/kpa		
				Outer Diameter	Section Width	0Km/h	5Km/h	10Km/h	0Km/h	5Km/h	10Km/h
18.00-25	68.0mm	13.00/2.5	44PR	1675	500	1200	1200	1200	32700	26300	24300
•18.00-25	56.0mm	13.00/2.5	44PR	1675	500	1100	1100	1100	32700	26300	24300
16.00-25	52.00mm	11.25/2.0	32PR	1495	430	1050	1050	1050	19200	18000	16900
16.00-25	52.00mm	11.25/2.0	36PR	1495	430	1100	1100	1100	23800	19200	18400
16.00-25TL	52.00mm	11.25/2.0	36PR	1495	430	1100	1100	1100	23800	19200	18400
14.00-24TT	43.00mm	10.00/2.0	28PR	1370	375	1100	1100	1100	18000	14500	13500
14.00-24TL	43.00mm	10.00/2.0	28PR	1370	375	1100	1100	1100	18000	14500	13500



PORT TYRE SERIES

KT62 (E-3/IND-3)

Features:

With a strong tyre structure, this type of tyre has high bearing capacity. It has a long service life and it is applicable to container gantry cranes since a super-strong anti-aging material is used in tyre body.



Tyre Specification	Pattern Depth	Standard Rim	Level	Dimension/mm		Load capacity at different speeds/kg			Inflation pressure at different speeds/kpa		
				Outer Diameter	Section Width	0Km/h	5Km/h	10Km/h	0Km/h	5Km/h	10Km/h
21.00-25	43.5mm	15.00/3.0	40/44PR	1750	570	1100	1100	1100	38900	31100	21800
21.00-35	43.5mm	15.00/3.0	40/44PR	2005	570	1100	1100	1100	43700	35200	33800
18.00-25	35.0mm	13.00/2.5	44PR	1615	500	1200	1200	1200	32700	26300	24300



INDUSTRY VEHICLE TYRE SERIES

KT632

Features:

With deep pattern, this type of tyre has a good grip and excellent wear resistance. It is suitable for mines, construction sites, stock yards, bad roads and mine roads as well as port and wharf vehicles.



Tyre Specification	Pattern Depth	Standard Rim	Level	Dimension/mm		Load capacity at different speeds/kg			Inflation pressure at different speeds/kpa		
				Outer Diameter	Section Width	0Km/h	5Km/h	10Km/h	0Km/h	5Km/h	10Km/h
14.00-24TL	30.0mm	10.00/2.0	△ 28PR	1375	375	1100	1100	1100	17100	13775	13500

KT019 (Nose-wheel forklift tyre)

Features:

Good wear resistance, deepened pattern, strong load-bearing capacity, strong anti-twisting performance, and suitable for forklift operations.



Tyre Specification	Pattern Depth	Standard Rim	Dimension/mm		Load capacity at different speeds/kg			
			Outer Diameter	Section Width	Counterbalanced Forklift Trucks		Industrial Vehicle	
					10km/h	25km/h	10km/h	25km/h
200/50-10/6.50	15.0mm	6.50F-10	460	221	2910	2240	2240	1900
140/55-9/4.00	9.0mm	4.00E-9	375	147	1380	1170	1060	900
23x9-10/6.50	18.0mm	6.50F-10	595	225	3730	3405	2865	2430
18x7-8/4.33R	20.0mm	4.33R-8	457	170	2430	2060	1870	1585
15X4.5-8/3.00	10.0mm	3.00D-8	380	114	1005	915	775	655

INDUSTRY VEHICLE PNEUMATIC TYRE SERIES

KT017

Features:



Good wear resistance, deepened pattern, strong load-bearing capacity, strong anti-twisting performance, and suitable for forklift operations.



Tyre Specification	Pattern Depth	Standard Rim	Dimension/mm		Load capacity at different speeds/kg				Inflation Pressure/kpa
			Outer Diameter	Section Width	Counterbalanced Forklift Trucks		Industrial Vehicle		
					Driving Wheel	Steering Wheel	10km/h	25km/h	
300-15/8.0	33.0mm	8.0-15	838	300	6895	5850	5310	4500	
28X9-15/7.0	29.0mm	7.0-15	706	225	4060	3445	3125	2650	
21X8-9/6.00	22.5mm	6.00E-9	535	207	2890	2645	2230	1890	
18X7-8/4.33R	20.0mm	4.33R-8	457	170	2430	2060	1870	1585	
16X6-8/4.33	15.5mm	4.33R-28	162	418	1545	1190	1185	1005	
9.00-20/7.0	37.5mm	7.0-20	1038	259	6365	5400	4905	4500	
8.25-15/6.50	35.0mm	6.50-15	847	236	5085	4310	3910	3315	
7.00-12/5.00S	29.0mm	5.00S-12	683	192	3105	2635	2390	2025	
6.50-10/5.00	25.0mm	5.00F-10	597	178	2715	2310	2095	1775	
6.00-9/4.00	23.3mm	4.00E-09	545	160	1975	1675	1520	1290	
5.00-8/3.50D	21.0mm	3.50D-8	469	146	1255	1060	960	815	

KT219

Features:



Good wear resistance, deepened pattern, strong load-bearing capacity, strong anti-twisting performance, and suitable for forklift operations.



Tyre Specification	Pattern Depth	Standard Rim	Level	Dimension/mm		Load capacity at different speeds/kg				Inflation Pressure/kpa				
				Outer Diameter	Section Width	Counterbalanced Forklift Trucks		Industrial Vehicle						
						Driving Wheel	Steering Wheel	10km/h	25km/h		40km/h	50km/h		
27X10-12	14.5mm	8.00G	12PR	690	255	2970	2505	2755	2205	2505	1845	1650	1585	720
23X9-10	15.5mm	6.50F	12PR	595	225	2345	1980	2175	1740	1980	1460	1300	1250	760

INDUSTRY VEHICLE PNEUMATIC TYRE SERIES

KT220

Features:



Good wear resistance, deepened pattern, strong load-bearing capacity, strong anti-twisting performance, and suitable for forklift operations.



Tyre Specification	Pattern Depth	Standard Rim	Level	Dimension/mm		Load capacity at different speeds/kg				Inflation Pressure/kpa				
				Outer Diameter	Section Width	Counterbalanced Forklift Trucks		Industrial Vehicle						
						Driving Wheel	Steering Wheel	Driving Wheel	Steering Wheel		10km/h	25km/h	40km/h	50km/h
28x9-15	19.5mm	7.0	16PR	710	220	3050	2575	2835	2265	2575	1900	1695	1625	970
6.50-10	18.0mm	5.00F	12PR	590	175	1895	1600	1765	1410	-	-	-	-	1000

KT218

Features:



Good wear resistance, deepened pattern, strong load-bearing capacity, strong anti-twisting performance, and suitable for forklift operations.



Tyre Specification	Pattern Depth	Standard Rim	Level	Dimension/mm		Load capacity at different speeds/kg				Inflation Pressure/kpa				
				Outer Diameter	Section Width	Counterbalanced Forklift Trucks		Industrial Vehicle						
						Driving Wheel	Steering Wheel	Driving Wheel	Steering Wheel		10km/h	25km/h	40km/h	50km/h
300-15	23.5mm	8.0	20PR	840	300	Maximum Load 5940				930				
250-15	19.0mm	7.5	16PR	735	250	3865	3265	3500	2870	3265	2405	2145	2060	930
28x9-15	19.0mm	7.0	14PR	710	220	3050	2575	2835	2265	2575	1900	1695	1625	970
18X7-8	13.6mm	4.33R	14PR	465	173	1505	1270	1400	1120	-	-	-	-	970
9.00-20	19.5mm	7.0	16PR	1018	259	5595	4725	5200	4155	4725	3480	3110	2985	860
8.25-20	16.0mm	6.5	14PR	974	235	4575	3865	4250	3395	3865	2845	2540	2440	830
7.00-12	17.5mm	5.00S	14PR	676	190	2590	2190	2405	1925	2190	1610	1440	1380	1000
7.00-9	13.5mm	5.00S	10PR	590	190	1995	1685	1850	1480	1685	1240	1105	1065	860
6.50-10	17.0mm	5.00F	12PR	590	175	1895	1600	1765	1410	-	-	-	-	1000
6.00-9	14.0mm	4.00E	12PR	540	160	1675	1415	1560	1245	1415	1045	930	895	1030
6.00-9	14.0mm	4.00E	10PR	540	160	1505	1275	1400	1120	1275	940	835	805	860

INDUSTRY VEHICLE PNEUMATIC TYRE SERIES

KT216

Features:



Good wear resistance, deepened pattern, strong load-bearing capacity, strong anti-twisting performance, and suitable for forklift operations.



Tyre Specification	Pattern Depth	Standard Rim	Level	Dimension/mm		Load capacity at different speeds/kg								Inflation Pressure/kpa
						Counterbalanced Forklift Trucks				Industrial Vehicle				
				Outer Diameter	Section Width	25km/h		35km/h		10km/h	25km/h	40km/h	50km/h	
28x9-15	17.5mm	7.0	14PR	710	220	3050	2575	2835	2265	2575	1900	1695	1625	970
8.25-15	18.5mm	6.5	14PR	840	235	3775	3185	3505	2800	3185	2350	2095	2010	830
7.00-12	16.5mm	5.00S	12PR	676	190	2375	2005	2205	1765	2005	1480	1320	1265	860
6.50-10	15.5mm	5.00F	10PR	590	175	1655	1400	1540	1230	1400	1030	920	885	790
6.00-9	12.5mm	4.00E	10PR	540	160	1505	1275	1400	1120	1275	940	835	805	860
5.00-8	13.5mm	3.50D	8PR	470	137	1000	845	930	745	845	625	555	535	790

KT228

Features:



Good wear resistance, deepened pattern, strong load-bearing capacity, strong anti-twisting performance, and suitable for forklift operations.



Tyre Specification	Pattern Depth	Standard Rim	Level	Dimension/mm		Load capacity at different speeds/kg								Inflation Pressure/kpa
						Counterbalanced Forklift Trucks				Industrial Vehicle				
				Outer Diameter	Section Width	Driving Wheel	Steering Wheel	Driving Wheel	Steering Wheel	10km/h	25km/h	40km/h	50km/h	
300-15	32mm	8.0	22PR	840	300	Maximum Load 7155								1030
250-15	32.5mm	7.5	△20PR	735	250	Maximum Load 4580								1000
28x9-15	28.0mm	7.0	16PR	720	220	Maximum Load 3115								1000
8.25-20	33.5mm	6.5	△18PR	974	235	Maximum Load 5300								950
8.25-15	32.0mm	6.5	16PR	840	235	4050	3450	3600	3010	3450	2520	2250	2160	925
8.25-15	32.0mm	6.5	14PR	840	235	3775	3185	3505	2800	3185	2350	2095	2010	830
7.00-12	33.0mm	5.00S	14PR	676	190	2590	2190	2405	1925	2190	1610	1440	1380	1000
6.50-10	31.5mm	5.00F	12PR	590	175	1895	1600	1765	1410	-	-	-	-	1000



TRUCK TYRE SERIES

KT622

Features:

With a good grip and excellent wear resistance, this type of tyre is suitable for mines, construction sites, stock yards, bad roads and mine roads.



Tyre Specification	Pattern Depth	Standard Rim	Level	Dimension/mm		Load Capacity/kg		Inflation Pressure/kpa	
				Outer Diameter	Section Width	Single Tyre	Double Tyres	Single Tyre	Double Tyres
12.00-20	28.5mm	8.5	20PR	1145	315	4000	3450	880	810
11.00-20	28.5mm	8	18PR	1105	293	3650	3150	910	840
10.00-20	24.0mm	7.5	18PR	1073	278	3350	2900	910	840
9.00-20	25.0mm	7	16PR	1038	259	2900	2500	880	810

TRUCK TYRE SERIES

KT201

Features:

With unique pattern and strong body, this type of tyre has excellent heat dispersion and is suitable for mines, construction sites, and gravel roads.



Tyre Specification	Pattern Depth	Standard Rim	Level	Dimension/mm		Load Capacity/kg		Inflation Pressure/kpa	
				Outer Diameter	Section Width	Single Tyre	Double Tyres	Single Tyre	Double Tyres
12.00-20	25.0mm	8.5	20PR	1145	315	4000	3450	880	810
11.00-20	25.0mm	8	18PR	1105	293	3650	3150	910	840
10.00-20	23.0mm	7.5	18PR	1073	278	3350	2900	910	840
9.00-20	23.0mm	7	16PR	1038	259	2900	2500	880	810

TRUCK TYRE SERIES

KT24

Features:

With a good grip and excellent wear resistance, this type of tyre is suitable for mines, construction sites, stock yards, bad roads and mine roads.



Tyre Specification	Pattern Depth	Standard Rim	Level	Dimension/mm		Load Capacity/kg		Inflation Pressure/kpa	
				Outer Diameter	Section Width	Single Tyre	Double Tyres	Single Tyre	Double Tyres
12.00-20	30.0mm	8.5	20PR	1145	315	4000	3450	880	810
11.00-20	29.0mm	8	18PR	1105	293	3650	3150	910	840
10.00-20	29.0mm	7.5	18PR	1073	278	3350	2900	910	840
9.00-20	26.5mm	7	16PR	1038	259	2900	2500	880	810

KT11

Features:

With deepened pattern, widened crown, and reinforced body, this type of tyre has outstanding wear resistance and a long service life. Suitable for highway transportation.



Tyre Specification	Pattern Depth	Standard Rim	Level	Dimension/mm		Load Capacity/kg		Inflation Pressure/kpa	
				Outer Diameter	Section Width	Single Tyre	Double Tyres	Single Tyre	Double Tyres
12.00-20	15.0mm	8.5	18R	1145	315	3750	3350	810	740

KT13

Features:

With deepened pattern, widened crown, and reinforced body, this type of tyre has outstanding wear resistance and a long service life. Suitable for highway transportation.



Tyre Specification	Pattern Depth	Standard Rim	Level	Dimension/mm		Load Capacity/kg		Inflation Pressure/kpa	
				Outer Diameter	Section Width	Single Tyre	Double Tyres	Single Tyre	Double Tyres
11.00-20	15.0mm	8	18PR	1105	293	3650	3150	910	840
10.00-20	15.0mm	7.5	18PR	1073	278	3350	2900	910	840
9.00-20	15.5mm	7	14PR	1038	259	2575	2300	770	700

TRUCK TYRE SERIES

KT235

Features:

With novel pattern, this type of tyre saves fuel, prevents grooves from cracking and has good self-cleaning ability. Suitable for highway transportation.



Tyre Specification	Pattern Depth	Standard Rim	Level	Dimension/mm		Load Capacity/kg		Inflation Pressure/kpa	
				Outer Diameter	Section Width	Single Tyre	Double Tyres	Single Tyre	Double Tyres
11.00-20	17.0mm	8	18PR	1105	293	3650	3150	910	840
10.00-20	17.0mm	7.5	18PR	1073	278	3350	2900	910	840

D10B

Features:

With novel pattern, this type of tyre saves fuel, prevents grooves from cracking and has good self-cleaning ability. Suitable for highway transportation.



Tyre Specification	Pattern Depth	Standard Rim	Level	Dimension/mm		Load Capacity/kg		Inflation Pressure/kpa	
				Outer Diameter	Section Width	Single Tyre	Double Tyres	Single Tyre	Double Tyres
12.00-20	15.0mm	8.5	18PR	1145	315	3750	3350	810	740
11.00-20	15.0mm	8	18PR	1105	293	3650	3150	910	840
10.00-20	15.0mm	7.5	18PR	1073	278	3350	2900	910	840
9.00-20	14.5mm	7	16PR	1038	259	2900	2500	880	810

TRUCK TYRE SERIES

T17

Features:

With deepened pattern, widened crown, and reinforced body, this type of tyre has outstanding wear resistance and a long service life. Suitable for highway transportation.



Tyre Specification	Pattern Depth	Standard Rim	Level	Dimension/mm		Load Capacity/kg		Inflation Pressure/kpa	
				Outer Diameter	Section Width	Single Tyre	Double Tyres	Single Tyre	Double Tyres
12.00-20	17.0mm	8.5	20 PR	1145	315	4000	3450	880	810

T17A

Features:

With deepened pattern, widened crown, and reinforced body, this type of tyre has outstanding wear resistance and a long service life. Suitable for highway transportation.



Tyre Specification	Pattern Depth	Standard Rim	Level	Dimension/mm		Load Capacity/kg		Inflation Pressure/kpa	
				Outer Diameter	Section Width	Single Tyre	Double Tyres	Single Tyre	Double Tyres
14.00-20	20.0mm	10	20 PR	1265	375	5000	4375	770	700

KT77

Features:

Tyre Specification	Pattern Depth	Standard Rim	Level	Dimension/mm		Load Capacity/kg		Inflation Pressure/kpa	
				Outer Diameter	Section Width	Single Tyre	Double Tyres	Single Tyre	Double Tyres
11.00-20	20.5mm	8.0	18 PR	1105	293	3650	3150	910	840



ENGINEERING LOAD SERIES

ENGINEERING LOAD SERIES

KT626

Features:

With off-road pattern, this type of tyre has outstanding puncture resistance and passing performance. Suitable for all kinds of bad roads;



Tyre Specification	Pattern Depth	Standard Rim	Level	Dimension/mm		Load capacity at different speeds/kg		Inflation pressure at different speeds/kpa	
				Outer Diameter	Section Width	10km/h	70km/h	10km/h	70km/h
☆16.00-20	22.5mm	12.0-20	28 PR	1310	420	-	5600	-	650

KT632

Features:

Deepened pattern provides a good grip and excellent wear resistance. Suitable for mines, construction sites, stock yards, bad roads and mine roads.



Tyre Specification	Pattern Depth	Standard Rim	Level	Dimension/mm		Load capacity at different speeds/kg		Inflation pressure at different speeds/kpa	
				Outer Diameter	Section Width	10km/h	50km/h	10km/h	50km/h
16.00-25	32.0mm	11.25/2.0	△40+PR	1495	430	13800	8000	1350	1050
14.00-25	29.5mm	10.00/2.0	△36PR	1370	375	11500	6500	1200	850
14.00-24	31.0mm	10.00/2.0	36PR	1370	375	11100	6600	1175	865
13.00-25	27.5mm	8.50	32PR	1300	350	7500		810	

KT627

Features:

With better bearing capacity and excellent wear resistance, this type of tyre is suitable for mines, construction sites, stock yards, urban construction, etc.



Tyre Specification	Pattern Depth	Standard Rim	Level	Dimension/mm		Load capacity at different speeds/kg		Inflation pressure at different speeds/kpa	
				Outer Diameter	Section Width	10km/h	50km/h	10km/h	50km/h
10.00-20	19.5mm	7.5	16 PR	1055	278	6030	-	790	-
☆9.00-20	23.0mm	7.0	△16 PR	1045	280	5595	-	860	-

ENGINEERING LOAD SERIES

ENGINEERING LOAD SERIES

KT599A

Features:

High wear-resistant tread formula, unique pattern, and reinforced body provide superior wear resistance. Suitable for mines, construction sites, stock yards, bad roads and mine roads.



Tyre Specification	Pattern Depth	Standard Rim	Level	Dimension/mm		Load capacity at different speeds/kg		Inflation pressure at different speeds/kpa	
				Outer Diameter	Section Width	10km/h	50km/h	10km/h	50km/h
14.00-25	34.0mm	10.00/2.0	△ 36 +PR	1370	375	11500	6500	1200	850

ENGINEERING LOAD SERIES

KT798

Features:

With a good grip and excellent wear resistance, this type of tyre is suitable for mines, construction sites, stock yards, bad roads and mine roads.



Tyre Specification	Pattern Depth	Standard Rim	Level	Dimension/mm		Load capacity at different speeds/kg		Inflation pressure at different speeds/kpa	
				Outer Diameter	Section Width	Less than 15km/h	Less than 50km/h	Less than 15km/h	Less than 50km/h
14.00-25	28.5mm	10.00/2.0	36+PR	1370	375	11500	5900	1200	850

KT599

Features:

High wear-resistant tread formula, unique pattern, and reinforced body provide superior wear resistance. Suitable for mines, construction sites, stock yards, bad roads and mine roads.



Tyre Specification	Pattern Depth	Level	Standard Rim	Inflation Pressure/kg	Load Capacity /kpa
14.00-24	29.0mm	32PR	10.00/2.0	1000	10500
13.00-25	27.5mm	36PR	8.50	1300	10625

KT698

Features:

With a good grip and excellent wear resistance, this type of tyre is suitable for mines, construction sites, stock yards, bad roads and mine roads.



Tyre Specification	Pattern Depth	Level	Standard Rim	Inflation Pressure/kg	Load Capacity /kpa
14.00-20	25.0mm	20 ++PR	10.0	700	7500

ENGINEERING LOAD SERIES

KT62

Features:

With a good grip and excellent wear resistance, this type of tyre is suitable for mines, construction sites, stock yards, bad roads and mine roads.



Tyre Specification	Pattern Depth	Level	Standard Rim	Inflation Pressure/kg	Load Capacity /kpa
14.00-24	35.0mm	24PR	10.00/2.0	850	9500
13.00-25	27.5mm	36PR	8.50	1300	10625
13.00-25	27.5mm	28PR	8.50	740	5570

KT625

Features:

With better bearing capacity and excellent wear resistance, this type of tyre is suitable for mines, construction sites, stock yards, urban construction, etc.



Tyre Specification	Pattern Depth	Standard Rim	Level	Dimension/mm		Load capacity at different speeds/kg		Inflation pressure at different speeds/kpa	
				Outer Diameter	Section Width	10km/h	50km/h	10km/h	50km/h
☆20.5/70-16	20.0mm	8.5	14 PR	935	325	3000	1995	450	350
16/70-24	20.5mm	13(SDC)	14 PR	1175	410	5600	3350	450	350
16/70-24	26.5mm	13(SDC)	14 PR	1075	410	5150	3350	450	350

ENGINEERING LOAD SERIES

KT602 (L-3)

Features:

With better bearing capacity and excellent wear resistance, this type of tyre is suitable for mines, construction sites, stock yards, urban construction, etc.



Tyre Specification	Pattern Depth	Standard Rim	Level	Dimension/mm		Load capacity at different speeds/kg		Inflation pressure at different speeds/kpa	
				Outer Diameter	Section Width	10km/h	50km/h	10km/h	50km/h
☆20.5/70-16	18.5mm	8.5	14 PR	935	325	3000	1995	450	350

KT755 (R-4)

Features:

With better bearing capacity and excellent wear resistance, this type of tyre is suitable for mines, construction sites, stock yards, urban construction, etc.



Tyre Specification	Pattern Depth	Standard Rim	Level	Dimension/mm		Load capacity at different speeds/kg		Inflation pressure at different speeds/kpa	
				Outer Diameter	Section Width	10km/h	50km/h	10km/h	50km/h
☆20.5/65-16	13.0mm	9.5	14 PR	810	330	3000	1995	450	350

ENGINEERING MACHINERY TYRE SERIES

KT622/•KT622C

Features:

With optimally-designed blocky proportional pattern and excellent wear resistance, this kind of tyre is suitable for mines, construction sites, stockyards, bad roads and mining roads.



Tyre Specification	Pattern Depth	Standard Rim	Level	Dimension/mm		Load capacity at different speeds/kg		Inflation pressure at different speeds/kpa	
				Outer Diameter	Section Width	10km/h	50km/h	10km/h	50km/h
23.5-25	38.0mm	19.50/2.5	24 PR	1615	595	12500	8000	475	350
23.5-25	38.0mm	19.50/2.5	20PR	1615	595	10200	7300	350	300
23.5-25	38.0mm	19.50/2.5	18 PR	1615	595	10200	7300	350	300
•23.5-25	34.0mm	19.50/2.5	18 PR	1615	595	10200	7300	350	300

KT625 (E-3/L-3)

Features:

With strong grip and excellent wear resistance, this kind of tyre is suitable for mines, construction sites, and stockyards.



Tyre Specification	Pattern Depth	Standard Rim	Level	Dimension/mm		Load capacity at different speeds/kg		Inflation pressure at different speeds/kpa	
				Outer Diameter	Section Width	10km/h	50km/h	10km/h	50km/h
23.5-25	32.5mm	19.50/2.5	18PR	1615	595	10200	7300	350	300
23.5-25	32.5mm	19.50/2.5	16PR	1615	595	9500	6150	300	225

KT62C (E-3/L-3)

Features:

With optimally-designed blocky proportional pattern and excellent wear resistance, this kind of tyre is suitable for mines, construction sites, stockyards, bad roads and mining roads.



Tyre Specification	Pattern Depth	Standard Rim	Level	Dimension/mm		Load capacity at different speeds/kg		Inflation pressure at different speeds/kpa	
				Outer Diameter	Section Width	10km/h	50km/h	10km/h	50km/h
23.5-25	31.5mm	19.50/2.5	24 PR	1615	595	12500	8000	475	350
20.5-25	31.0mm	17.00/2.0	24 PR	1490	520	10300	6700	525	400

ENGINEERING MACHINERY TYRE SERIES

KT755 (G-2/L-2)

Features:

With directional tread pattern and excellent traction performance, this kind of tyre is suitable for soft land and sandy land.

Tyre Specification	Pattern Depth	Standard Rim	Level	Dimension/mm		Load Capacity/kg	Inflation Pressure/kpa
				Outer Diameter	Section Width		
17.5-25	25.0mm	14.00/1.5	16PR	1350	445	3350	275
14.00-24	25.0mm	8.00TG	16PR	1350	360	7300	550
13.00-24	24.5mm	8.00TG	18PR	1280	335	7000	670
13.00-24	24.5mm	8.00TG	16PR	1280	335	6500	600



ENGINEERING MACHINERY TYRE SERIES

KT619 (E-4)

Features:

This kind of tyre has a strong grip, excellent wear resistance. Its changing pattern groove can improve the traction force and side force of the tire; its new body structure can enhance the impact resistance and fatigue resistance, so this kind of tyre is suitable for mines, construction sites, stockyards, bad roads and mining roads.



Tyre Specification	Pattern Depth	Standard Rim	Level	Dimension/mm		Load capacity at different speeds/kg		Inflation pressure at different speeds/kpa	
				Outer Diameter	Section Width	10km/h	50km/h	10km/h	50km/h
23.5-25	42.5mm	19.50/2.5	40 PR	1615	595	18000	12000	750	600

KT620/IL9 (E-4)

Features:

Large block, deep pattern, outstanding driving and braking performance, I-shaped pattern groove which can improve the traction and side force of the tire; Thickened body structure, it can enhance impact resistance and puncture resistance.



Tyre Specification	Pattern Depth	Standard Rim	Level	Dimension/mm		Load capacity at different speeds/kg		Inflation pressure at different speeds/kpa	
				Outer Diameter	Section Width	10km/h	50km/h	10km/h	50km/h
23.5-25	76.0mm	19.50/2.5	△40 PR	1615	595	18000	12000	750	600

IB9 (E-3/L-3)

Features:

With optimally-designed blocky proportional pattern and excellent wear resistance, this kind of tyre is suitable for mines, construction sites, stockyards, bad roads and mining roads.



Tyre Specification	Pattern Depth	Standard Rim	Level	Dimension/mm		Load capacity at different speeds/kg		Inflation pressure at different speeds/kpa	
				Outer Diameter	Section Width	10km/h	50km/h	10km/h	50km/h
23.5-25	35.0mm	19.50/2.5	20 PR	1615	595	10200	7300	350	300
17.5-25	26.0mm	14.00/1.5	△18 PR	1350	445	8000	4700	550	350
17.5-25	26.0mm	14.00/1.5	16PR	1350	445	8000	4700	550	350

ENGINEERING MACHINERY TYRE SERIES

KT630 (E-4)

Features:

With thickened pattern groove bottom, excellent puncture resistance, and strong gripping force, this kind of tyre is suitable for mines, construction sites, stock yards, bad roads and mining roads.



Tyre Specification	Pattern Depth	Standard Rim	Level	Dimension/mm		Load capacity at different speeds/kg		Inflation pressure at different speeds/kpa	
				Outer Diameter	Section Width	10km/h	50km/h	10km/h	50km/h
23.5-25	50.0mm	19.50/2.5	28 PR	1615	595	13600	8750	550	400

KT777 (C-2)

Features:

With shuttle-shaped tread pattern, good wear resistance and puncture resistance, it can be used as a tyre of a roller.



Tyre Specification	Pattern Depth	Standard Rim	Level	Dimension/mm		Load capacity at different speeds/kg		Inflation pressure at different speeds/kpa	
				Outer Diameter	Section Width	10km/h	50km/h	10km/h	50km/h
23.1-26	18.0mm	DW20	16PR	1500	595	6150	-	260	-

KT100S (L-5S)

Features:

With widened crown, excellent puncture resistance, strong bearing capacity, strong adaptability under harsh environment, this kind of tyre is suitable for tunnel, downhole and mining operation.



Tyre Specification	Pattern Depth	Standard Rim	Level	Dimension/mm		Load Capacity/kg	Inflation Pressure/kpa
				Outer Diameter	Section Width		
26.5-25	/	22.00/3.0	36PR	1800	675	18500	925
12.00-24	/	8.5	24PR	1275	315	7500	975
10.00-20	/	7.5	20PR	1073	278	5600	910

ENGINEERING MACHINERY TYRE SERIES

KT62 (E-3/L-3)

Features:

With strong grip and excellent wear resistance, this kind of tyre is suitable for mines, construction sites, stockyards, bad roads and mining roads.



Tyre Specification	Pattern Depth	Standard Rim	Level	Dimension/mm		Load capacity at different speeds/kg		Inflation pressure at different speeds/kpa	
				Outer Diameter	Section Width	10km/h	50km/h	10km/h	50km/h
26.5-25(TL)	40.0mm	22.00/3.0	28 PR	1750	675	15500	10000	475	350
26.5-25(TT)	40.0mm	22.00/3.0	24 PR	1750	675	14000	9250	550	450
26.5-25(TT)	40.0mm	22.00/3.0	28 PR	1750	675	15500	10000	475	350
23.5-25(TL)	35.0mm	17.00/2.0	24 PR	1490	520	10300	6700	525	400
23.5-25(TT)	35.0mm	19.50/2.5	24PR(外)	1615	595	12500	8000	475	300
23.5-25(TT)	35.0mm	19.50/2.5	20 PR	1615	595	10200	7300	350	300
23.5-25(TL)	35.0mm	19.50/2.5	20PR	1615	595	10200	7300	350	300
23.5-25(TT)	35.0mm	19.50/2.5	18 PR	1615	595	10200	7300	350	300
23.5-25(TT)	35.0mm	19.50/2.5	16 PR	1615	595	9500	6150	300	225
20.5-25(TL)	31.0mm	17.00/2.0	24PR	1490	520	10300	6700	525	400
20.5-25(TT)	31.0mm	17.00/2.0	24PR	1490	520	10300	6700	525	400
20.5-25(TT)	30.0mm	17.00/2.0	20PR	1490	520	9500	6000	450	325
20.5-25(TT)	30.0mm	17.00/2.0	16PR	1490	520	8250	5450	350	275
17.5-25(TT)	26.0mm	14.00/1.5	20PR	1350	445	8250	5000	575	400
17.5-25(TT)	26.0mm	14.00/1.5	18PR	1350	445	8000	4700	550	350
17.5-25(TT)	24.5mm	14.00/1.5	16PR	1350	445	7300	4250	475	300
17.5-25(TL)	24.0mm	14.00/1.5	16PR	1350	445	7300	4250	475	300



LIGHT TRUCK TYRE

KT235

Features:

The new type of horizontal mixing deepened pattern has superior load capacity and excellent wear resistance. Suitable for quarries and urban-rural fringes.



Tyre Specification	Pattern Depth	Standard Rim	Level	Dimension/mm		Load Capacity/kg		Inflation Pressure/kpa	
				Outer Diameter	Section Width	Single Tyre	Double Tyres	Single Tyre	Double Tyres
7.50-16LT	13.5mm	6.00G	16 PR	916	215	1650	1450	830	830

LIGHT TRUCK TYRE

KT632

Features:

With a good grip and excellent wear resistance, this type of tyre is suitable for mines, construction sites, stock yards, bad roads and mine roads.



Tyre Specification	Pattern Depth	Standard Rim	Level	Dimension/mm		Load Capacity/kg		Inflation Pressure/kpa	
				Outer Diameter	Section Width	Single Tyre	Double Tyres	Single Tyre	Double Tyres
8.25-16LT	25.0mm	6.50H	16PR	855	235	1800	1600	730	730
7.50-16LT	25.0mm	6.00G	16PR	816	215	1650	1450	830	830
7.00-16LT	22.0mm	5.50F	16PR	775	200	1400	1250	810	770
6.50-16LT	21.5mm	5.50F	12PR	750	185	1060	925	630	630

LIGHT TRUCK TYRE

KT623

Features:

With deepened pattern, unique design, superior load capacity and long service life, this type of tyre is suitable for mines, construction sites, and bad roads.



Tyre Specification	Pattern Depth	Standard Rim	Level	Dimension/mm		Load Capacity/kg		Inflation Pressure/kpa	
				Outer Diameter	Section Width	Single Tyre	Double Tyres	Single Tyre	Double Tyres
8.25-16LT	25.0mm	6.50H	16PR	855	235	1800	1600	730	730
7.50-16LT	25.0mm	6.00G	16PR	816	215	1650	1450	830	830
7.00-16LT	18.5mm	5.50F	16PR	775	200	1400	1250	810	770

KT225

Features:

With a good grip and excellent wear resistance, this type of tyre is suitable for mines, construction sites, stock yards, bad roads and mine roads.



Tyre Specification	Pattern Depth	Standard Rim	Level	Dimension/mm		Load Capacity/kg		Inflation Pressure/kpa	
				Outer Diameter	Section Width	Single Tyre	Double Tyres	Single Tyre	Double Tyres
8.25-16LT	18.5mm	6.50H	16PR	855	235	1800	1600	730	730
7.50-16LT	17.5mm	6.00G	16PR	816	215	1650	1450	830	830
7.00-16LT	13.0mm	5.50F	16PR	775	200	1400	1250	810	770
6.50-16LT	9.0mm	5.50F	12PR	750	185	1060	925	630	630

KT118

Features:

With a good grip and excellent wear resistance, this type of tyre is suitable for mines, construction sites, stock yards, bad roads and mine roads.



Tyre Specification	Pattern Depth	Standard Rim	Level	Dimension/mm		Load Capacity/kg		Inflation Pressure/kpa	
				Outer Diameter	Section Width	Single Tyre	Double Tyres	Single Tyre	Double Tyres
7.50-16LT	19.5mm	6.00G	16PR	816	215	1650	1450	830	830
7.00-16LT	19.0mm	5.50F	16PR	775	200	1400	1250	810	770
6.50-16LT	19.0mm	5.50F	12PR	750	185	1060	925	630	630

LIGHT TRUCK TYRE

KT35

Features:

With superior load capacity and excellent wear resistance, this type of tyre is economical and applicable to all kinds of good roads.



Tyre Specification	Pattern Depth	Standard Rim	Level	Dimension/mm		Load Capacity/kg		Inflation Pressure/kpa	
				Outer Diameter	Section Width	Single Tyre	Double Tyres	Single Tyre	Double Tyres
7.50-16LT	12.0mm	6.00G	16PR	816	215	1650	1450	830	830
7.00-16LT	11.0mm	5.50F	16PR	775	200	1400	1250	810	770
6.50-16LT	10.0mm	5.50F	12PR	750	185	1060	925	630	630

KT36

Features:

With superior load capacity and excellent wear resistance, this type of tyre is economical and applicable to all kinds of good roads.



Tyre Specification	Pattern Depth	Standard Rim	Level	Dimension/mm		Load Capacity/kg		Inflation Pressure/kpa	
				Outer Diameter	Section Width	Single Tyre	Double Tyres	Single Tyre	Double Tyres
8.25-16LT	12.0mm	6.50H	16PR	855	235	1800	1600	730	730
7.00-16LT	11.0mm	5.50F	14PR	775	200	1400	1250	810	770
6.50-14LT	10.0mm	4	8++PR	705	180	775	690	420	420

LIGHT TRUCK TYRE

KT103

Features:

With novel pattern, this type of tyre saves fuel, prevents grooves from cracking and has good self-cleaning ability. Suitable for highway transportation.



Tyre Specification	Pattern Depth	Standard Rim	Level	Dimension/mm		Load Capacity/kg		Inflation Pressure/kpa	
				Outer Diameter	Section Width	Single Tyre	Double Tyres	Single Tyre	Double Tyres
6.50-16LT	10.0mm	5.50F	12 PR	750	185	1060	925	630	630

KT632

Features:

With a good grip and excellent wear resistance, this type of tyre is suitable for mines, construction sites, stock yards, bad roads and mine roads.



Tyre Specification	Pattern Depth	Standard Rim	Level	Dimension/mm		Load Capacity/kg		Inflation Pressure/kpa	
				Outer Diameter	Section Width	Single Tyre	Double Tyres	Single Tyre	Double Tyres
6.50-14LT	18.0mm	1/2J	10PR	705	180	900	800	530	530

KT42

Features:

With superior load capacity and excellent wear resistance, this type of tyre is economical and applicable to all kinds of good roads.



Tyre Specification	Pattern Depth	Standard Rim	Level	Dimension/mm		Load Capacity/kg		Inflation Pressure/kpa	
				Outer Diameter	Section Width	Single Tyre	Double Tyres	Single Tyre	Double Tyres
7.00-15LT	12.0mm	5.50F	12 PR	750	200	1150	1030	630	630

LIGHT TRUCK TYRE

KT13

Features:

With superior load capacity and excellent wear resistance, this type of tyre is economical and applicable to all kinds of good roads.



Tyre Specification	Pattern Depth	Standard Rim	Level	Dimension/mm		Load Capacity/kg		Inflation Pressure/kpa	
				Outer Diameter	Section Width	Single Tyre	Double Tyres	Single Tyre	Double Tyres
8.25-16LT	12.0mm	6.50H	14PR	855	235	1700	1500	630	630
7.00-16LT	12.0mm	5.50F	12PR	775	200	1400	1250	810	770

ENTERPRISE HONOR



KT11

Features:

With superior load capacity and excellent wear resistance, this type of tyre is economical and applicable to all kinds of good roads.



Tyre Specification	Pattern Depth	Standard Rim	Level	Dimension/mm		Load Capacity/kg		Inflation Pressure/kpa	
				Outer Diameter	Section Width	Single Tyre	Double Tyres	Single Tyre	Double Tyres
6.50-16LT	10.0mm	5.50F	12PR	750	185	850	750	420	420

